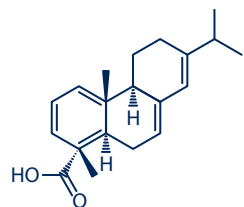
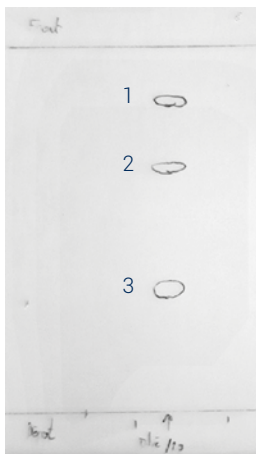
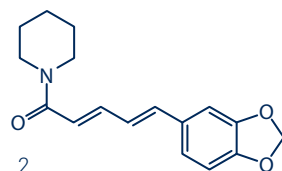


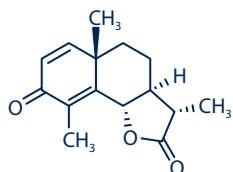
1. TLC method development



1
Abietic acid (m/z : 303)



2
Piperine (m/z : 286)



3
a-santonin (m/z : 247)

Mobile phase:
75% Hexane / Isopropanol 25%

Compound of interest:
Compounds 1, 2 and 3

Compound	Rf	CV
1	0.84	1.19
2	0.66	1.52
3	0.32	3.13

$$\Delta CV_{1-2} = 0.32$$

$$\Delta CV_{2-3} = 1.49$$

2. Genius proposal



Among the columns proposed by Genius, we have selected a PF-15SIHP-F0025, which was available in stock :

TLC to Flash & Prep (Virgin Phase) UPLOAD RESET

Crude sample mg

Solvent 1 75 % Additive

Solvent 2 25 % Additive

Select your compound(s) of interest

1	Rf 0.84	<input checked="" type="checkbox"/>
2	Rf 0.66	<input checked="" type="checkbox"/>
3	Rf 0.32	<input checked="" type="checkbox"/>

SELECT A COLUMN

Column	Stock
PF-15SIHP-F0012	<input checked="" type="checkbox"/>
PF-15SIHC-F0012	<input checked="" type="checkbox"/>
PF-15SIHP-F0025	<input checked="" type="checkbox"/>
PF-15SIHC-F0025	<input checked="" type="checkbox"/>
PF-15SIHP-F0040	<input checked="" type="checkbox"/>
PF-15SIHC-F0040	<input checked="" type="checkbox"/>

— Top 3 columns(SIHC : for MW < 500)

INJECTION MODE

Is the crude fully soluble in the below conditions ?

Hexane 97.7%
Isopropanol 2.3%

Yes No

Liquid mL (max 2.59 mL)

Dry load

GO TO MANUAL METHOD

GO TO RUN

3. Flash conditions

Device: puriFlash® 5.250

Solvents: A: Hexane

B: Isopropanol

Column: PF-15SIHP-F0025

Flow rate: 15mL/min

Injection mode: Liquid injection

Injection volume: 1 mL

Concentration: 10mg/mL abietic acid (m/z : 303)

5mg/mL piperine (m/z : 286)

10mg/mL a-santonin (m/z : 247)

in Acetonitrile + 0,1% formic acid

Detection: APCI Positive

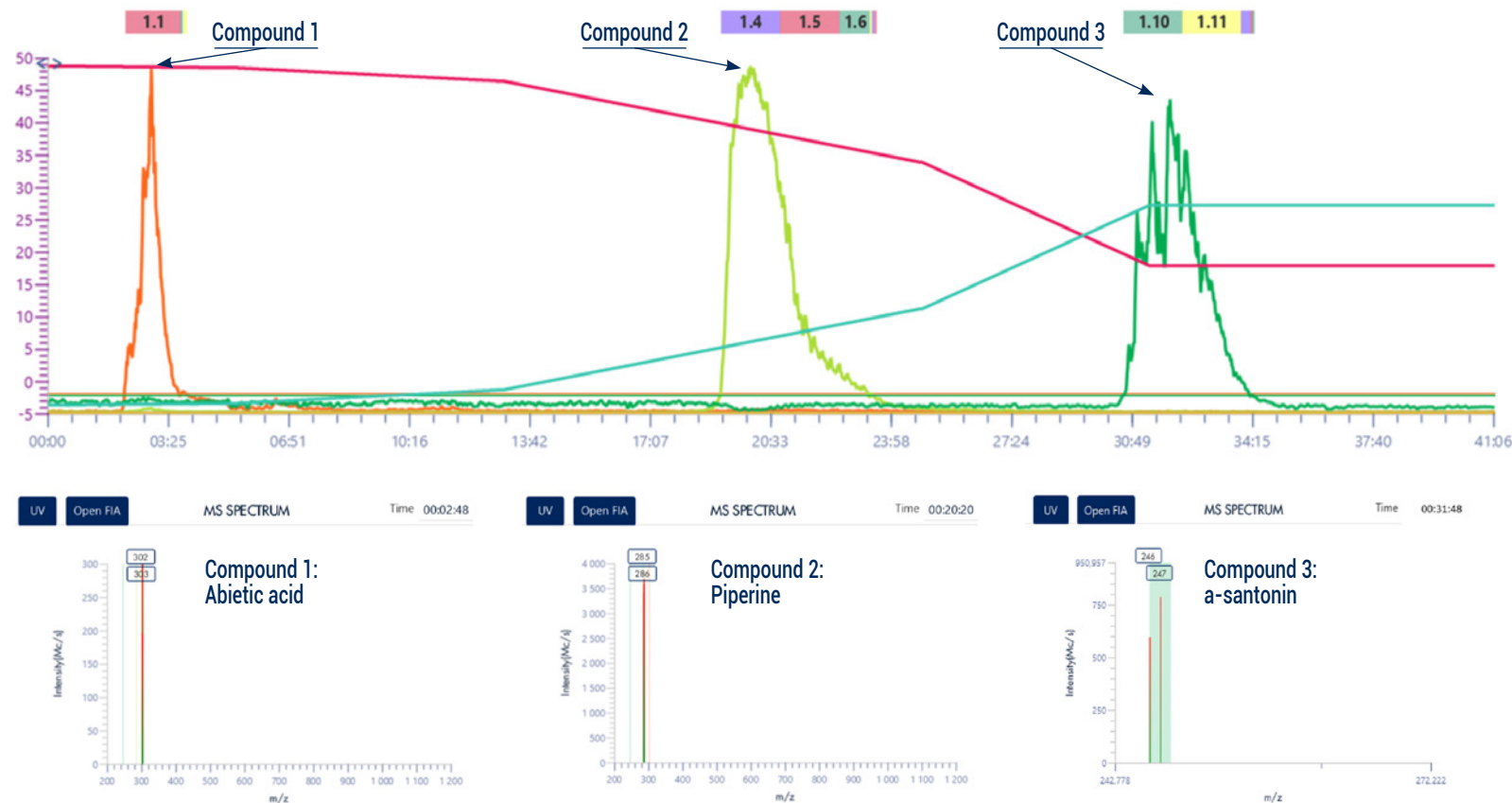
XIC1 302-304 m/z (orange)

XIC2 285-287 m/z (clear green)

XIC3 246-248 m/z (dark green)

Elution conditions:

CV	A (%)	B (%)
0:00	97.7	2.3
05:24	97.2	2.8
12:58	93.4	6.6
24:51	70.6	29.4
31:20	41.5	58.5
41:03	41.5	58.5



To achieve this purification:

You will need

- puriFlash® 5.250
[Discover it](#) [Add to card](#)
- puriFlash® MS
[Discover it](#) [Add to card](#)
- puriFlash® column PF-15SIHP-F0025
[Discover it](#) [Add to card](#)

We highly recommend

- Back pressure regulator 20psi + kit IO2360 [Add to card](#)
- 1mL Stainless Steel Loop with RFID tag AYHET0 [Add to card](#)
- Manometer MS B4VBK0 [Add to card](#)

Download our App

"TLC to Flash & Prep Chromatography" to make your TLC developments easier and faster.

