

## Prep conditions

Device: puriFlash® 4250 (or now puriFlash® 5.250)

Solvents: A: Hexane

B: Ethyl Acetate

Column: PF15SIHP-250/212

Flow rate: 22mL/min

Injection mode: Liquid injection

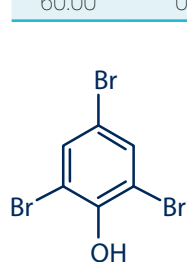
Concentration: 180mg/500µL

Detection: UV 254nm

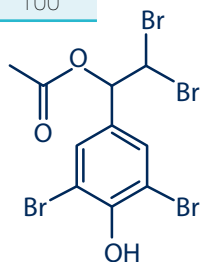
UV Scan 200-600nm

Elution conditions:

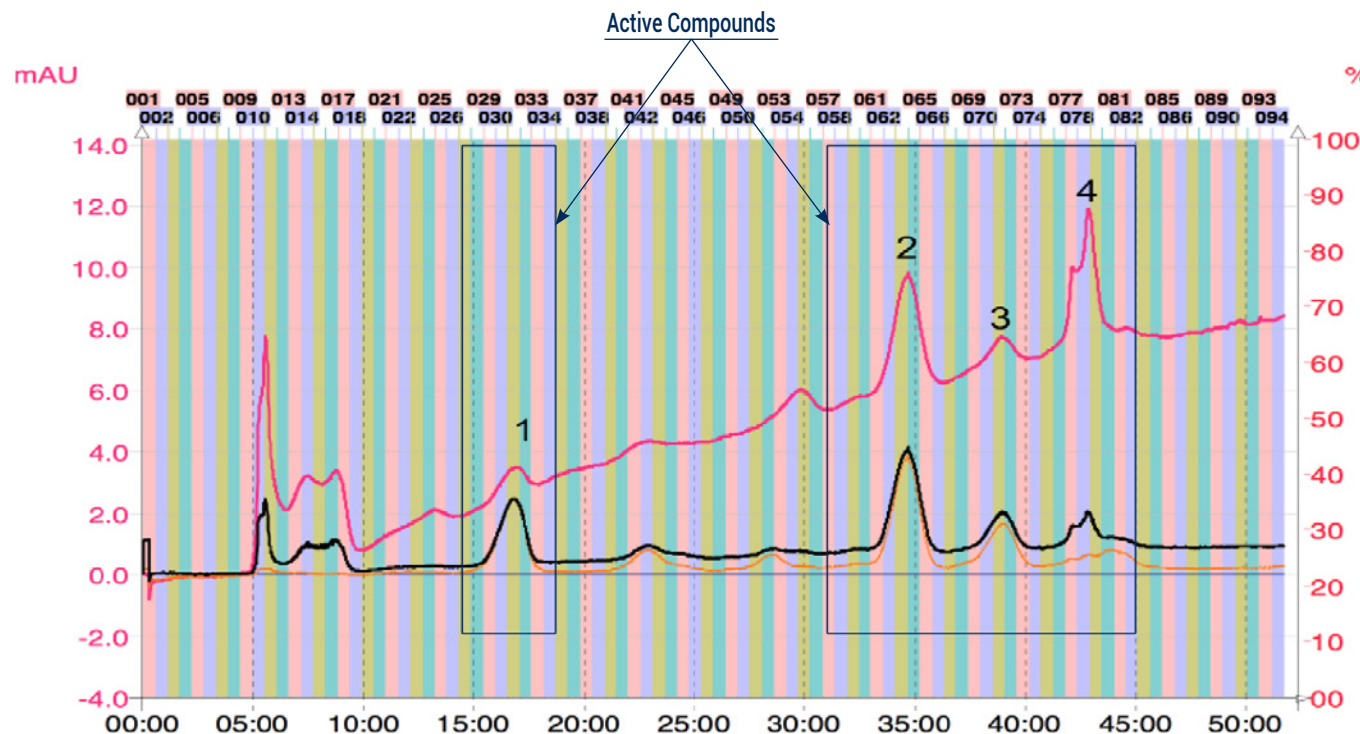
t (min)	A (%)	B (%)
00:00	90	10
60:00	0	100



Compound 1



Compound 2



## To achieve this purification:

### You will need

- puriFlash® 5.250  
[Discover it](#) [Add to card](#)
- puriFlash® column PF15SIHP-250/212  
[Discover it](#) [Add to card](#)

### We highly recommend

- 16X150mm Rack  
 AYHE40 [Add to card](#)
- Tube holding claw 16mm  
 AYHEC0 [Add to card](#)
- Tubes 16x150mm  
 BX5400 [Add to card](#)

