

1. Analytical conditions

Solvents: A: Water + 0.1% Formic Acid

B: Acetonitrile

HPLC Column: Meteoric core C18, 2.7 μ m, 50x2.1mm ID

Flow rate: 1mL/min

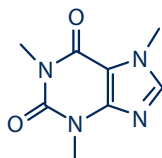
Injection mode: Liquid injection

Injection volume: 1 μ L

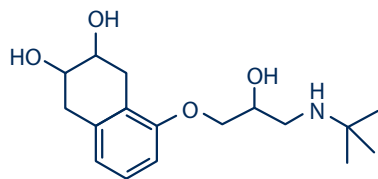
Detection: MS (TIC), UV 214nm, UV 254nm

Elution conditions:

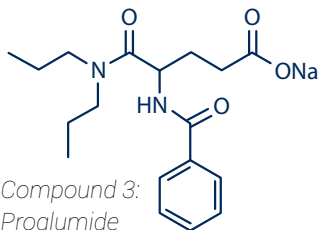
t (min)	A (%)	B (%)
00:00	95	5
01:48	0	100
02:42	0	100



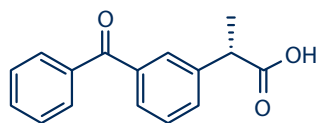
Compound 1: Caffeine
Exact Mass: 194.08



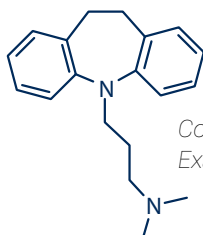
Compound 2: Nadolol
Exact Mass: 309.19



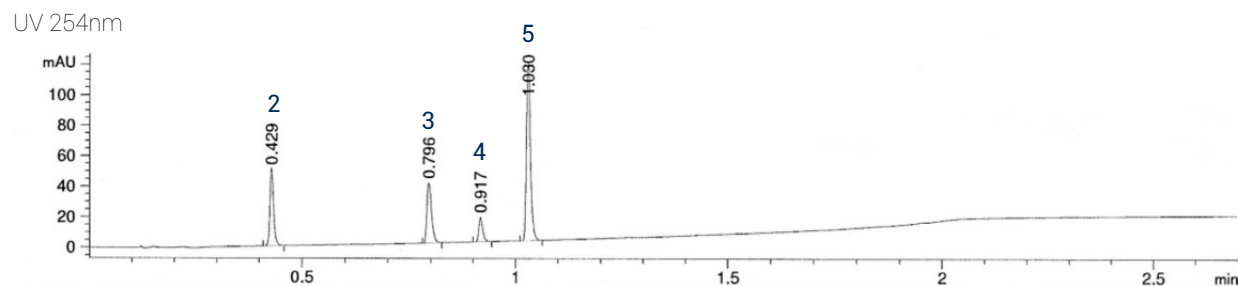
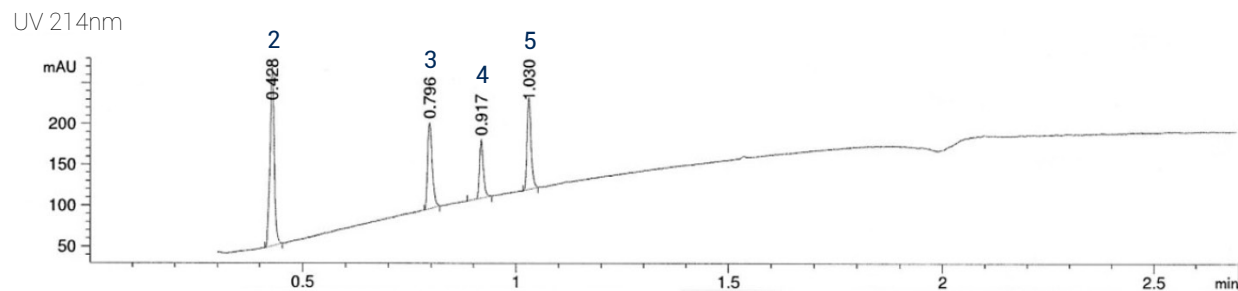
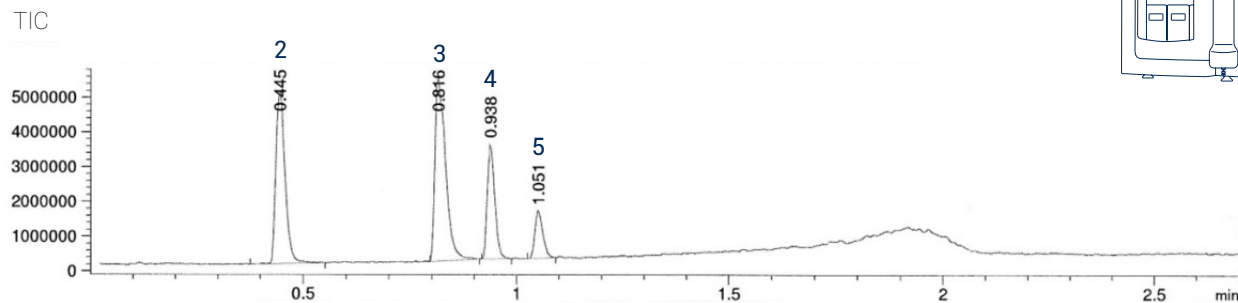
Compound 3: Proglumide
Exact Mass: 356.17



Compound 4: (S)-Ketoprofen
Exact Mass: 254.09



Compound 5: Imipramine
Exact Mass: 280.19



2. Prep conditions

Device: puriFlash® 4250-iELSD (or now puriFlash® 5.250 pack iELSD)

Solvents: A: Water + 1% Formic Acid

B: Acetonitrile

Column: US10C18HQ-150/212

Flow rate: 16mL/min

Injection mode: Liquid injection

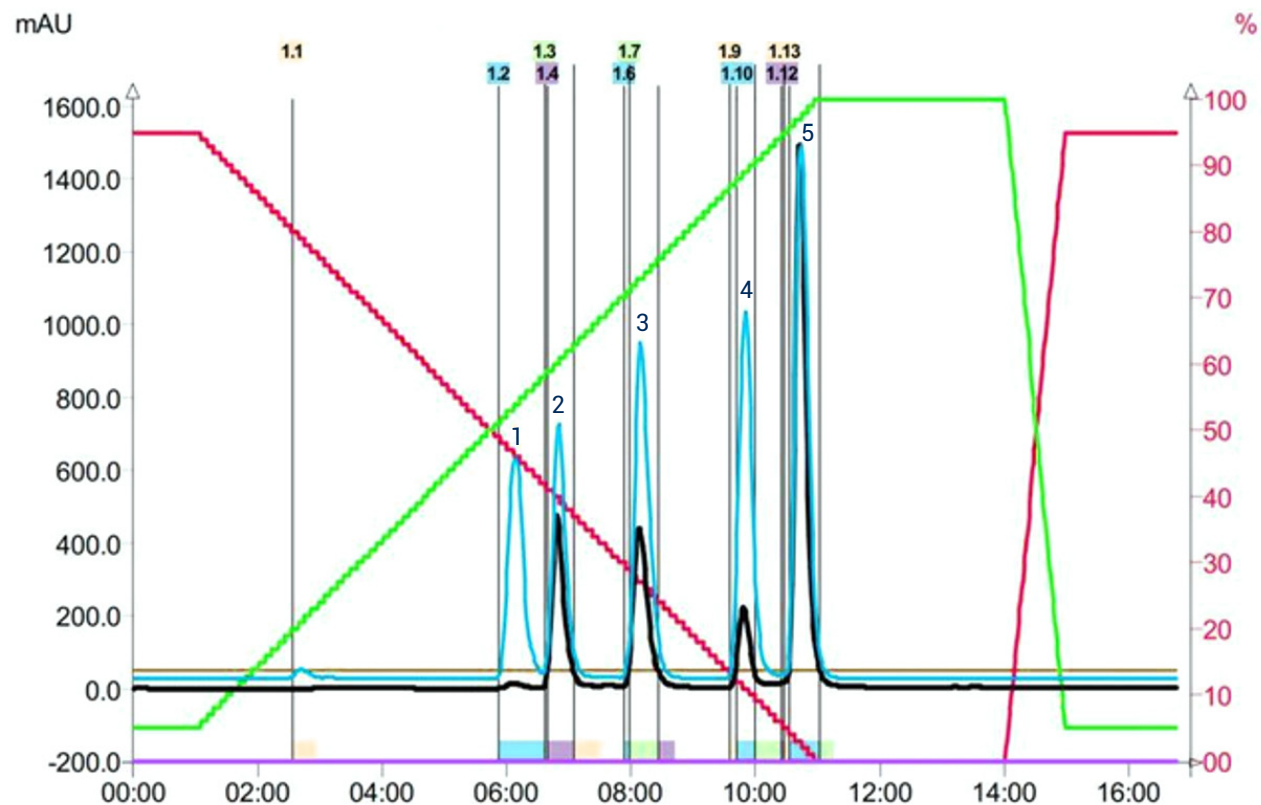
Injection volume: 700µL

Crude sample: 40mg

Detection: UV 254nm (black), ELSD (35°C) (blue)

Elution conditions:

t (min)	A (%)	B (%)
00:00	95	5
01:00	95	5
11:00	0	100
14:00	0	100
15:00	95	5
18:00	95	5



To achieve this purification:

You will need

- puriFlash® 5.250
[Discover it](#) [Add to card](#)
- Integrated ELSD
[Discover it](#) [Add to card](#)
- Uptisphere® Strategy™ column US10C18HQ-150/212
[Discover it](#) [Add to card](#)

We highly recommend

- Manometer ELSD FJ6720 [Add to card](#)
- Compressor for integrated ELSD without quiet cover 1H3490 [Add to card](#)
- 1mL Stainless Steel Loop with RFID tag AYHETO [Add to card](#)

