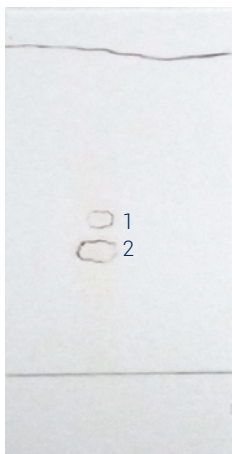


1. TLC method development



Mobile phase:
90% Dichloromethane / Methanol 10%

Compound of interest:
Compound 2

Compound	Rf	CV
1	0.45	2.22
2	0.39	2.56

$$\Delta CV_{2-1} = 0.34$$

2. Genius proposal



Among the columns proposed by Genius, we have selected a PF-15SIHP-F0040, which was available in stock :

TLC to Flash & Prep (Normal Phase)

↑ UPLOAD

↶ RESET

Crude sample mg

Solvent 1 % Additive

Solvent 2 % Additive

Select your compound(s) of interest

Rf 0.45

Rf 0.39

SELECT A COLUMN

Column	Stock
PF-15SIHC-F0025	<input type="checkbox"/>
PF-15SIHP-F0040	<input checked="" type="checkbox"/>
PF-15SIHP-F0080	<input checked="" type="checkbox"/>
PF-15SIHP-F0120	<input checked="" type="checkbox"/>
PF-15SIHP-F0220	<input checked="" type="checkbox"/>
PF-15SIHP-F0330	<input checked="" type="checkbox"/>

— Top 3 columns (SIHC : for MW < 500)

INJECTION MODE

The crude is fully soluble in the below conditions:

Dichloromethane 98.9%

Methanol 1.1%

Yes No

Liquid mL (max 4.17 mL)

Dry load

GO TO MANUAL METHOD

GO TO RUN

3. Flash conditions

Device: puriFlash® 5.250P

Solvents: A: Dichloromethane
B: Methanol

Column: PF-15SIHP-F0040

Flow rate: 26mL/min

Injection mode: Solid deposit with celite
(Dry-load F0004)

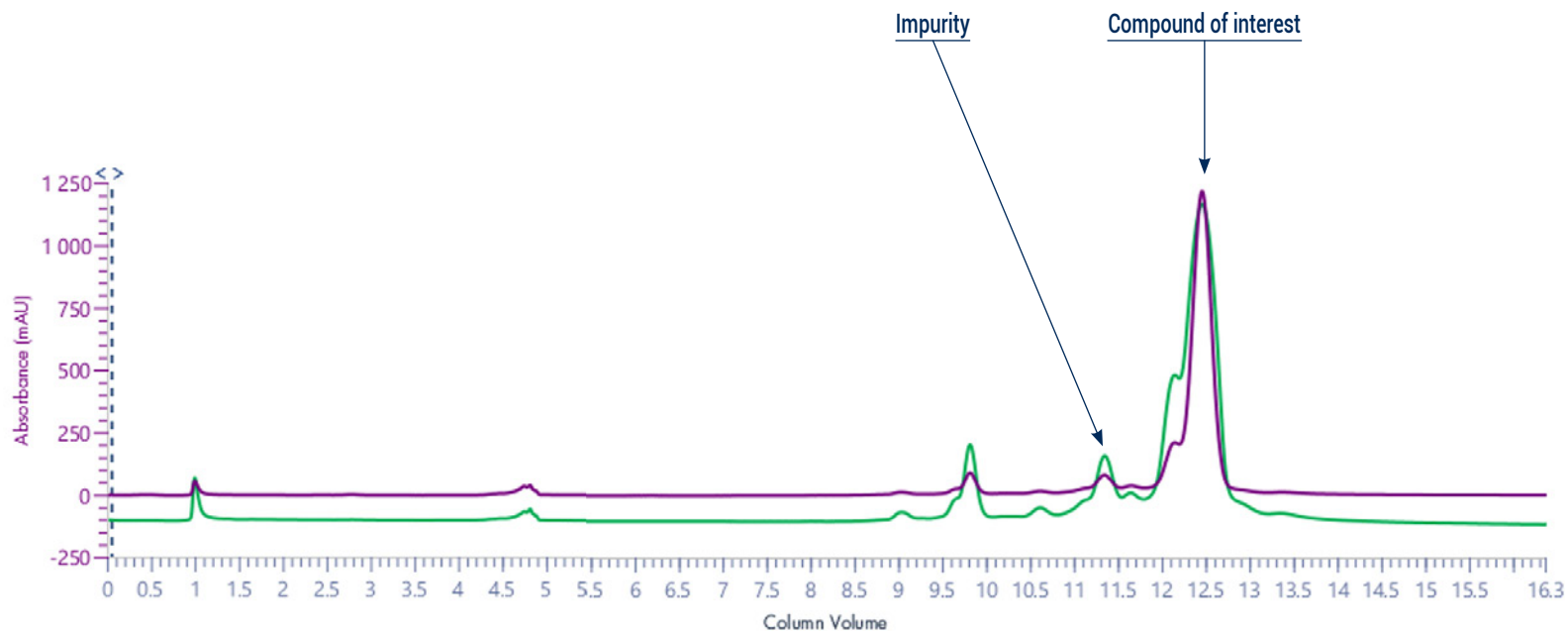
Crude sample: 300mg

Detection: UV 254nm (purple)
UV Scan 200-400nm (green)

Pressure: 5bar

Elution conditions:

CV	A (%)	B (%)
0.00	98.9	1.1
2.50	98.6	1.4
6.00	93.3	2.7
11.50	88.4	11.6
14.51	77	23
19.01	77	23



To achieve this purification:

You will need

- puriFlash® 5.250P
[Discover it](#) [Add to card](#)
- puriFlash® column PF-15SIHP-F0040
[Discover it](#) [Add to card](#)
- puriFlash® Dry-load PF-DLE-F0004
[Discover it](#) [Add to card](#)

We highly recommend

- Extractor with 2 extraction tubes + Kit
AYHDZ0 [Add to card](#)
- 16x150mm Rack
AYHE40 [Add to card](#)
- Magic box Flash
AXF7P0 [Add to card](#)

Download our App

"TLC to Flash & Prep Chromatography"
to make your TLC developments easier
and faster.

