

## 1. Analytical conditions

**Solvents:** A: Heptane + 0.1% DEA

B: Dichloromethane + 0.1% DEA

**HPLC Column:** ChiralPak ID 5 $\mu$ m 250x4.6mm

**Flow rate:** 1 mL/min

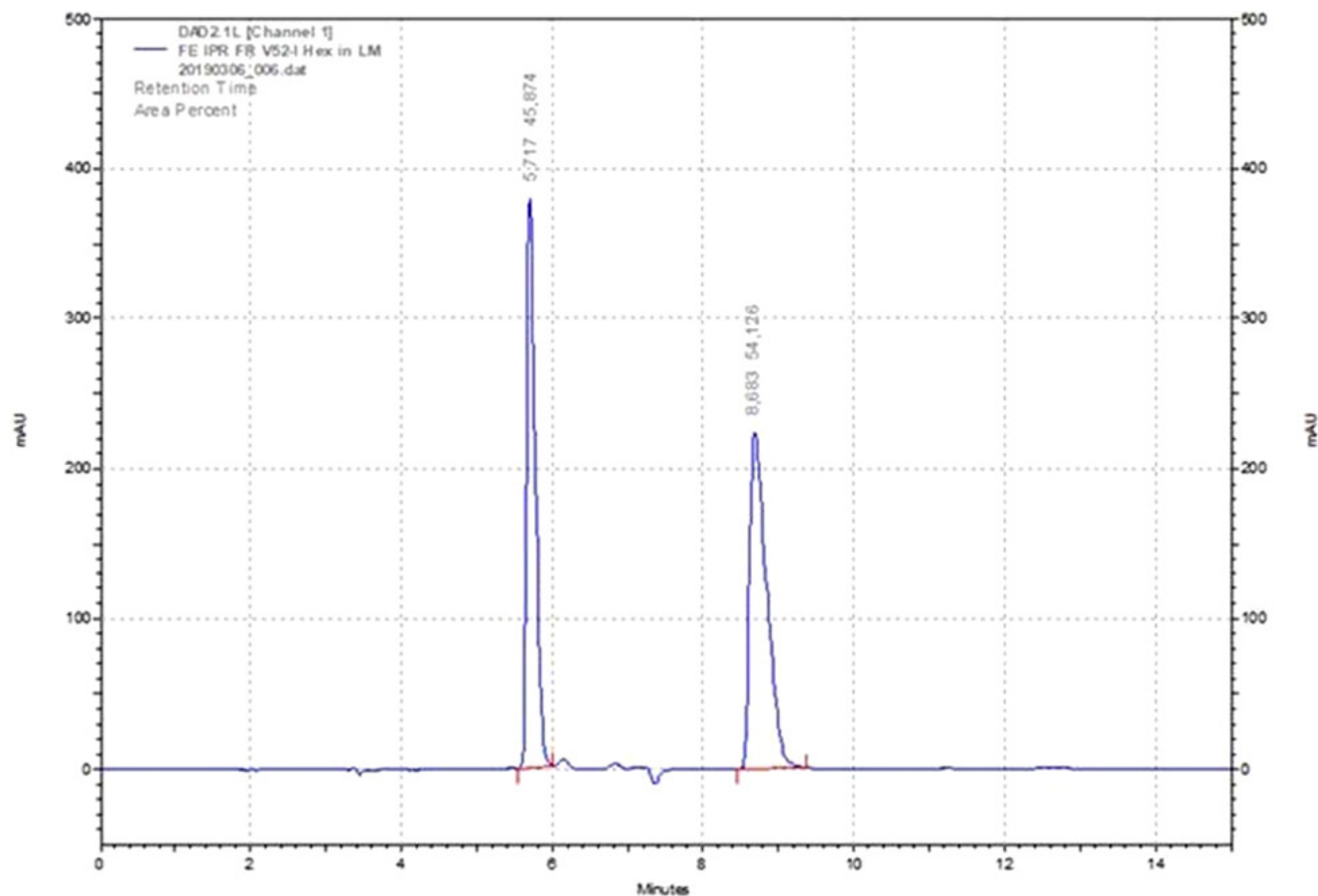
**Injection mode:** Liquid injection

**Injection volume:** 20 $\mu$ L

**Detection:** UV 254nm

**Elution conditions:** Isocratic mode

t (min)	A (%)	B (%)
00:00	75	25
14:00	75	25



## 2. Flash conditions

**Device:** puriFlash® 4250 (or now puriFlash® 5.250)

**Solvents:** A: Heptane + 0.1% DEA

B: Dichloromethane + 0.1% DEA

**Column:** CT-20ID-F0040

**Flow rate:** 26mL/min

**Crude sample:** 30mg & 60mg

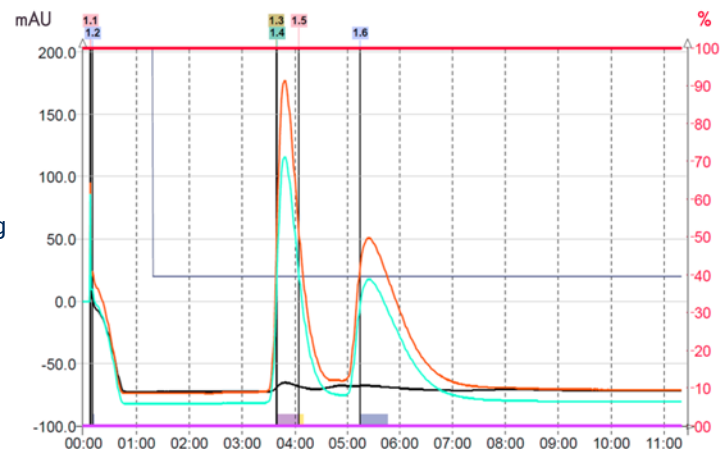
**Detection:** UV 254nm (black), UV 230nm (blue)

UV 220nm (orange for chromatogram 1) (black for chromatogram 2)

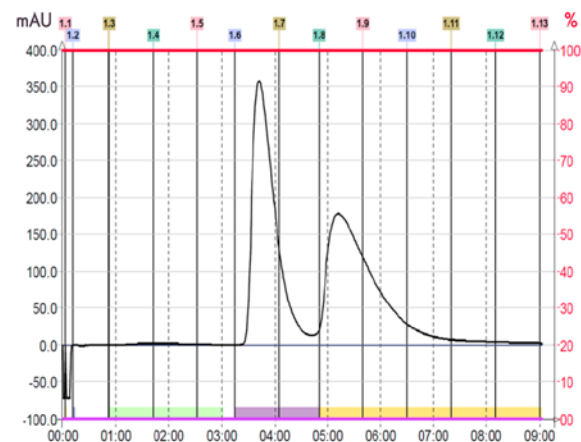
**Elution conditions:** Isocratic mode

t (min)	A (%)	B (%)
00:00	75	25
11:00	75	25

30mg loading



60mg loading



### To achieve this purification:

#### You will need

- puriFlash® 5.250  
[Discover it](#) [Add to card](#)
- puriFlash® column CT-20ID-F0040  
[Discover it](#) [Add to card](#)

#### We highly recommend

- Ballasting for 1/8" tubing - 5 units  
DZ7360 [Add to card](#)
- 16x150mm Rack  
AYHE40 [Add to card](#)
- Tubes 16x150mm  
BX5400 [Add to card](#)

