

1. Analytical conditions

Solvents: A: Water + 0.1% Formic Acid
B: ACN + 0.1% Formic Acid

HPLC Column: Dual Pore ODS 250x4.6mm, 20/45µm

Flow rate: 0.72mL/min

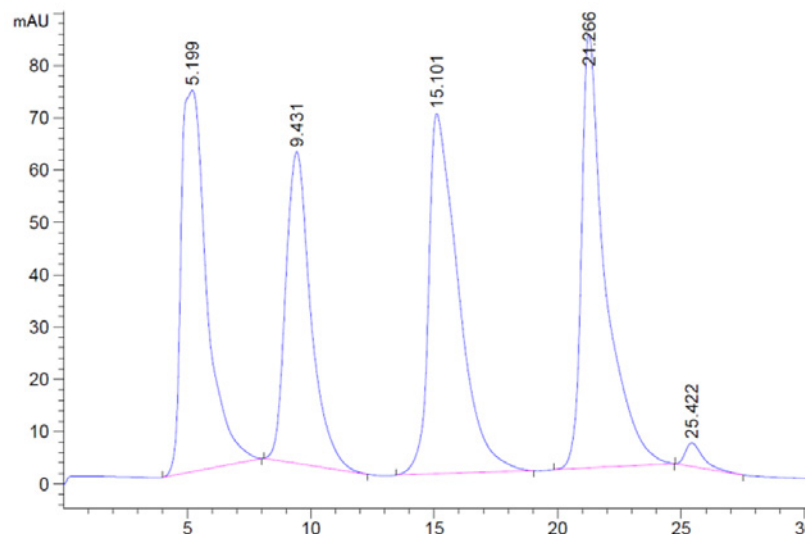
Injection mode: Liquid injection

Injection volume: 5µL

Detection: UV 254nm

Elution conditions:

t (min)	A (%)	B (%)
00:00	90	10
02:00	90	10
23:00	10	90
26:00	10	90
27:00	90	10
48:00	90	10



2. Flash conditions

Device: puriFlash® XS 420 Plus (or now puriFlash® XS 520 Plus)

Solvents: A: Water + 0.1% Formic Acid
B: ACN + 0.1% Formic Acid

Columns: Dual Pore ODS F0025

Flow rate: 15mL/min

Injection mode: Liquid injection

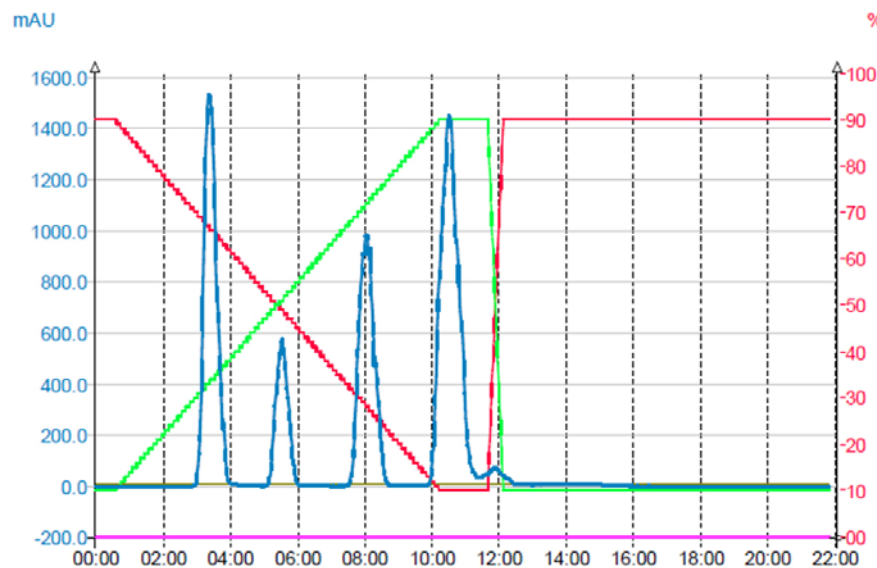
Injection volume: 236µL

Detection: UV 254nm

Pressure: 2bar

Elution conditions:

t (min)	A (%)	B (%)
00:00	90	10
00:32	90	10
10:16	10	90
11:38	10	90
12:07	90	10
21:49	90	10



3. Optimization

Device: puriFlash® XS 420 Plus

(or now puriFlash® XS 520 Plus)

Solvents: A: Water + 0.1% Formic Acid

B: ACN + 0.1% Formic Acid

Columns: Dual Pore ODS F0025

Injection mode: Liquid injection

Injection volume: 236µL

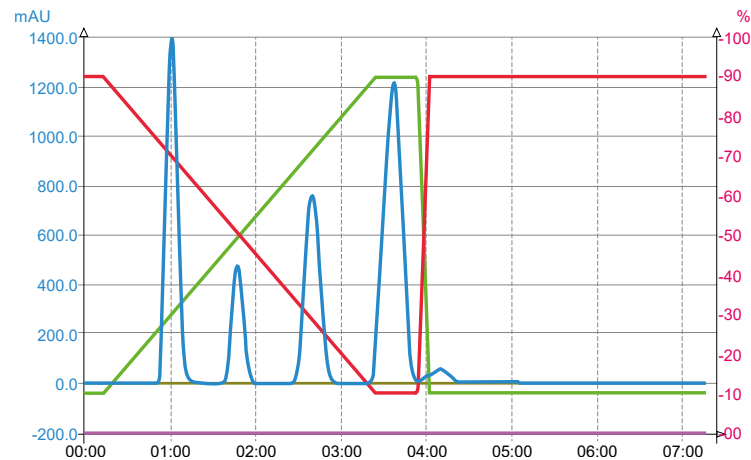
Detection: UV 254nm

Pressure: 2bar

Flow rate: 45mL/min (Optimum flow rate x3)

Elution conditions:

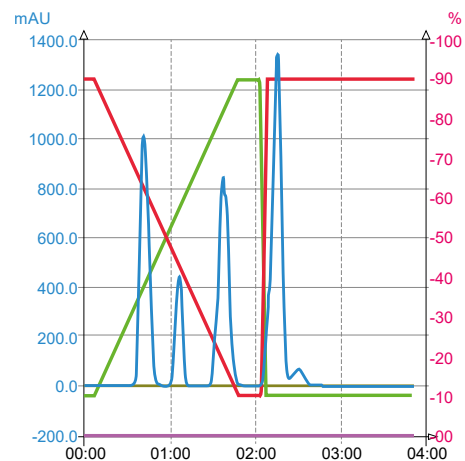
t (min)	A (%)	B (%)
00:00	90	10
00:11	90	10
03:25	10	90
03:53	10	90
04:02	90	10
07:16	90	10



Flow rate: 90mL/min (Optimum flow rate x6)

Elution conditions:

t (min)	A (%)	B (%)
00:00	90	10
00:06	90	10
01:49	10	90
02:04	10	90
02:09	90	10
03:53	90	10



To achieve this purification:

You will need

- puriFlash® XS 520 Plus
[Discover it](#) [Add to card](#)

We highly recommend

- Extractor with 2 extraction tubes + kit
1R8570 [Add to card](#)
- Safety solvent caps kit - 4 units
DV2760 [Add to card](#)
- Safety waste cap with container 5L + Filter
IO6930 [Add to card](#)

