

1. Analytical conditions

Solvents: A: Water + 0.1%TFA

B: Acetonitrile + 0.1% TFA

HPLC Column: puriFlash® BIO 100 C18-N 15µm 250x4.6mm

Flow rate: 1 mL/min

Injection mode: Liquid injection

Injection volume: 10µL

Concentration: Mixture of Peptide standard (0.25mg/mL) and Protein standard (0.5mg/mL)

Detection: UV 215nm

Elution conditions:

t (min)	A (%)	B (%)
00:00	95	5
30:00	60	40

Compounds:

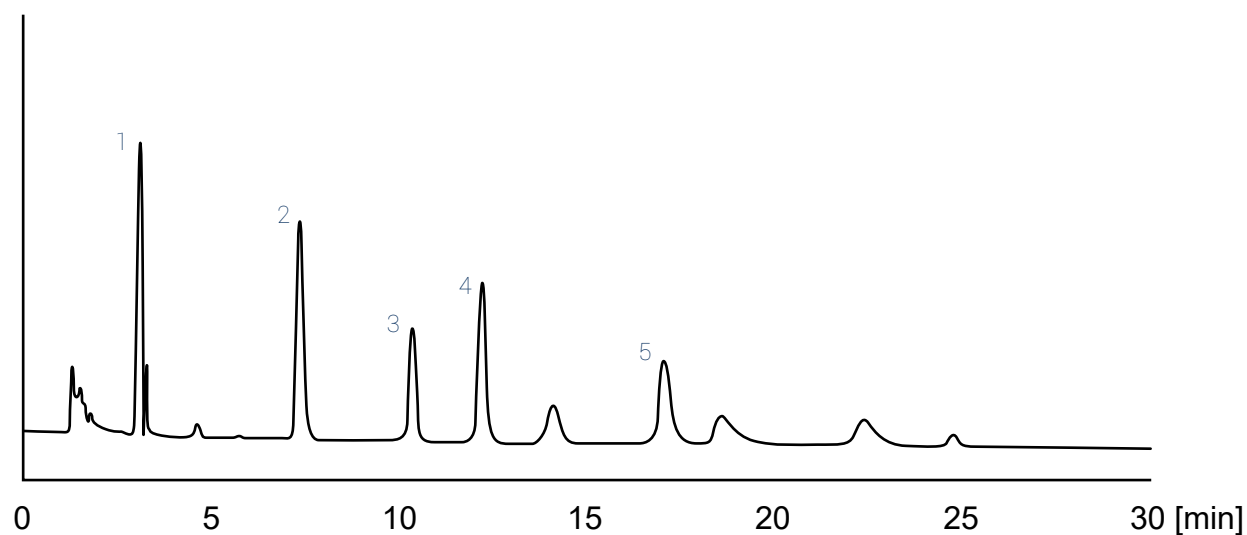
1. GLY-TYR (MW: 238 g.mol⁻¹)

2. VAL-TYR-VAL (MW: 380g.mol⁻¹)

3. Met-Enkephalin (MW: 574g.mol⁻¹)

4. Angiotensin II (MW: 1 000g.mol⁻¹)

5. Cytochrome C (MW: 11 749g.mol⁻¹)



2. Flash conditions

Device: puriFlash® XS 420 Plus

(or now puriFlash® XS 520 Plus)

Solvents: A: Water + 1% TFA

B: Acetonitrile + 0.1%TFA

Column: puriFlash® Monolith C18 30µm F0025 (PM-30C18-F0025)

Flow rate: 15mL/min & 80mL/min

Injection mode: Liquid injection

Injection volume: 150µL

Crude sample: 9mg

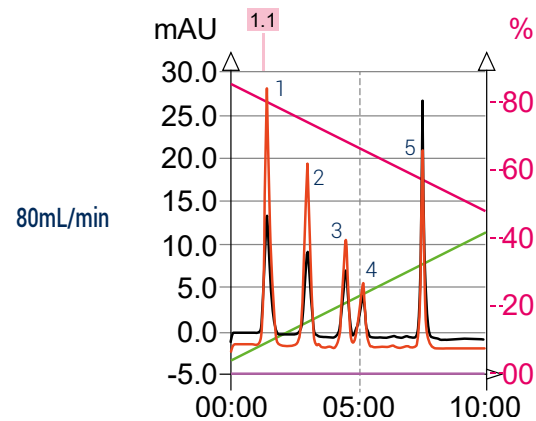
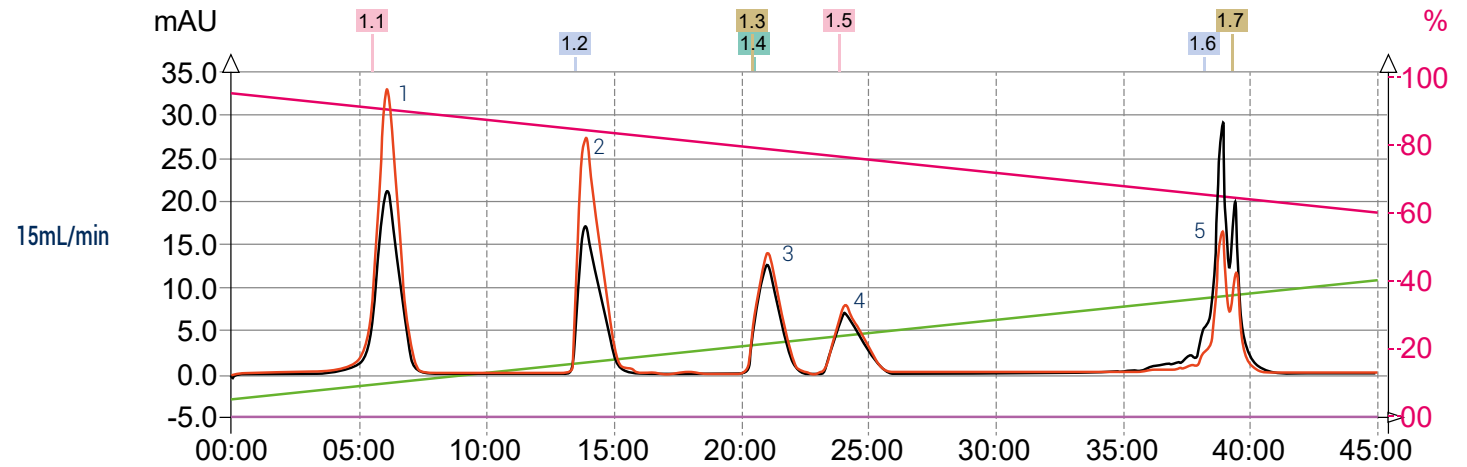
Detection: UV 254nm (black),

UV 215nm (orange)

Pressure: 2bar

Elution conditions:

t (min)	A (%)	B (%)
00:00	95	5
45:00	60	40



To achieve this purification:

You will need

- puriFlash® XS 520 Plus
[Discover it](#) [Add to card](#)
- puriFlash® column PM-30C18-F0025
[Discover it](#) [Add to card](#)

We highly recommend

- Safety waste cap with container 5L + Filter IO6930 [Add to card](#)
- Ballasting for 1/8" tubing - 5 units DZ7360 [Add to card](#)
- 250mL Schott bottles rack 1R8660 [Add to card](#)