

1. Analytical conditions

Solvents: A: Water + 0.1% HCOOH

B: ACN + 0.1% HCOOH

HPLC Column: Atlantis T3, 25x4.6mm, 5µm

Flow rate: 1mL/min

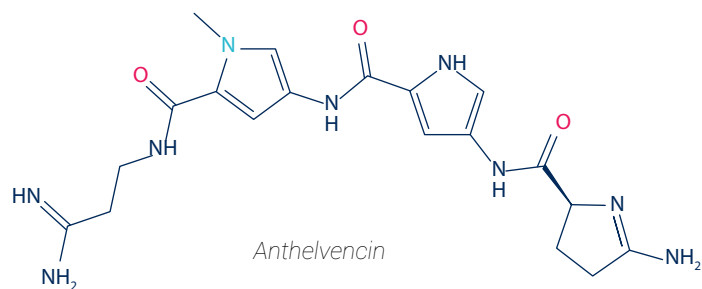
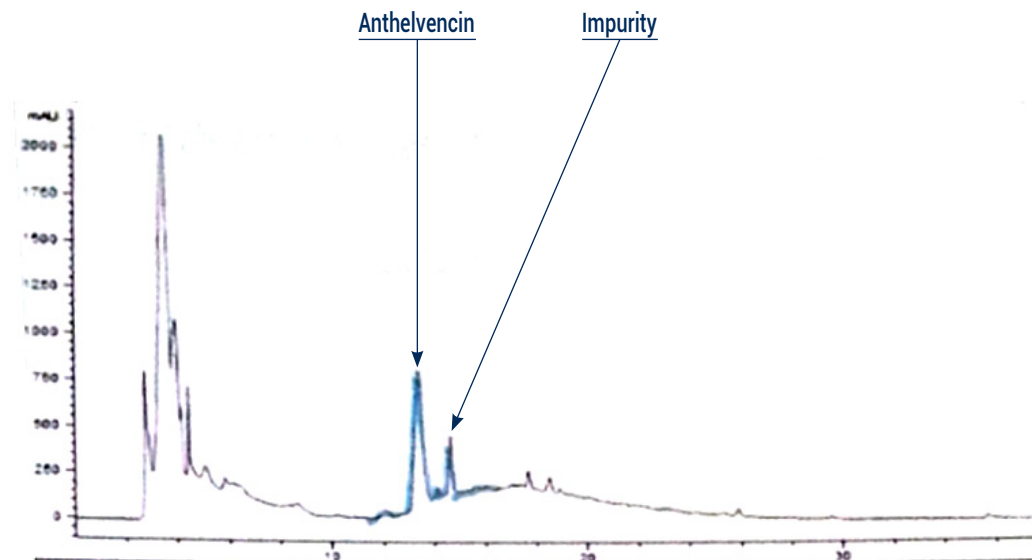
Injection mode: Liquid injection

Injection volume: 10µL

Detection: UV 297nm, UV 200nm

Elution conditions:

t (min)	A (%)	B (%)
00:00	95	5
07:00	95	5
30:00	40	60



2. Flash conditions

Device: puriFlash® XS 420 Plus_Ultra (or now puriFlash® XS 520 Plus_Ultra)

Solvents: A: Water + 0.1% HCOOH

B: ACN + 0,1% HCOOH

Column: PF-15C18AQ-F0012

Flow rate: 15mL/min

Injection mode: Solid deposit (Dry-load F0004)

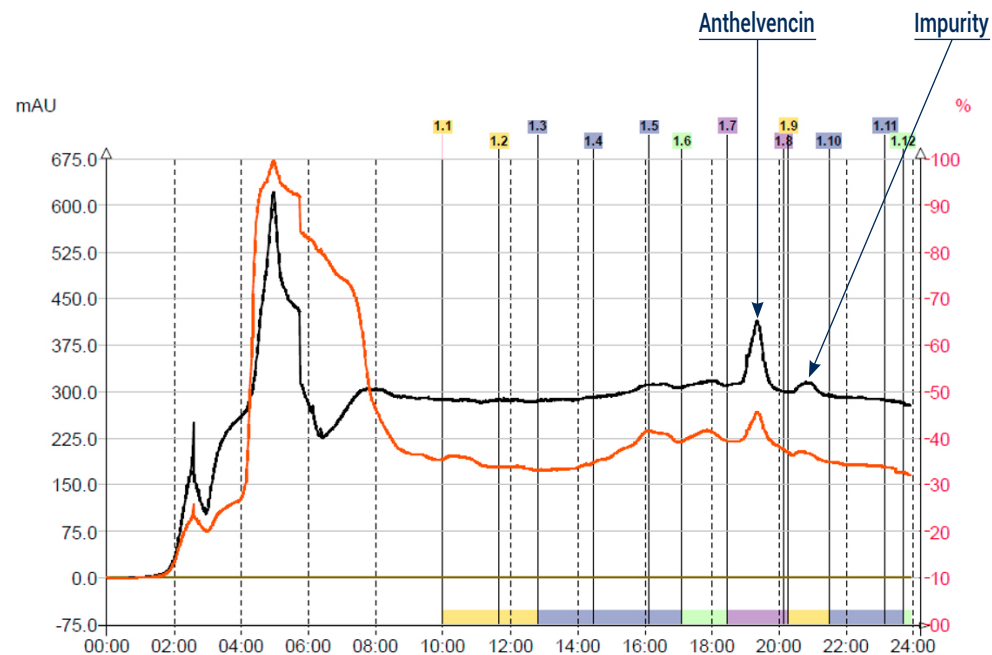
Crude sample: 500mg

Detection: UV 297nm (black), UV 200nm (orange)

Pressure: 9bar

Elution conditions:

t (min)	A (%)	B (%)
00:00	95	5
06:00	95	5
43:00	40	60



To achieve this purification:

You will need

- puriFlash® XS 520 Plus
[Discover it](#) [Add to card](#)
- puriFlash® column PF-15C18AQ-F0012
[Discover it](#) [Add to card](#)
- puriFlash® Dry-load F0004
[Discover it](#) [Add to card](#)

We highly recommend

- Magic box Flash B2JCJ0 [Add to card](#)
- Safety solvent caps kit - 4 units DV2760 [Add to card](#)
- Safety waste cap with container 20L + Filter JO4500 [Add to card](#)