

1. Analytical conditions

Solvents: A: Hexane 80%

B: iPrOH 20%

HPLC Column: Phenomenex Lux 5 μ m cellulose 1

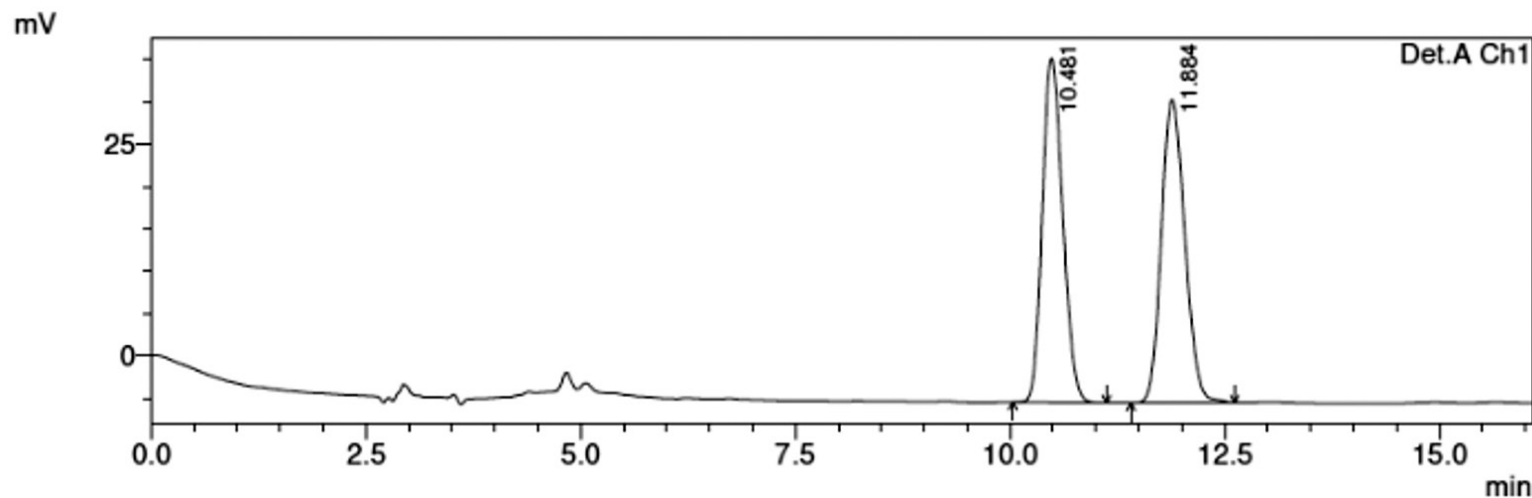
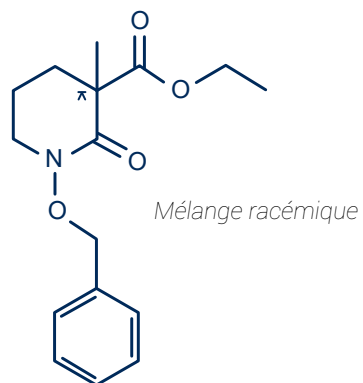
Flow rate: 1 mL/min

Injection mode: Liquid injection

Injection volume: 30 μ L

Detection: UV 254nm

Elution conditions: Isocratic mode



Peak#	Retention time	Area	Area %
1	10.481	672919	49.574
2	11.884	684481	50.426
Total	---	13587400	100.00

2. Flash conditions

Device: puriFlash® 4125-iELSD (or now puriFlash® 5.125 pack iELSD)

Solvents: A: Heptane

B: THF

Column: CT-201A-F0004

Flow rate: 5mL/min

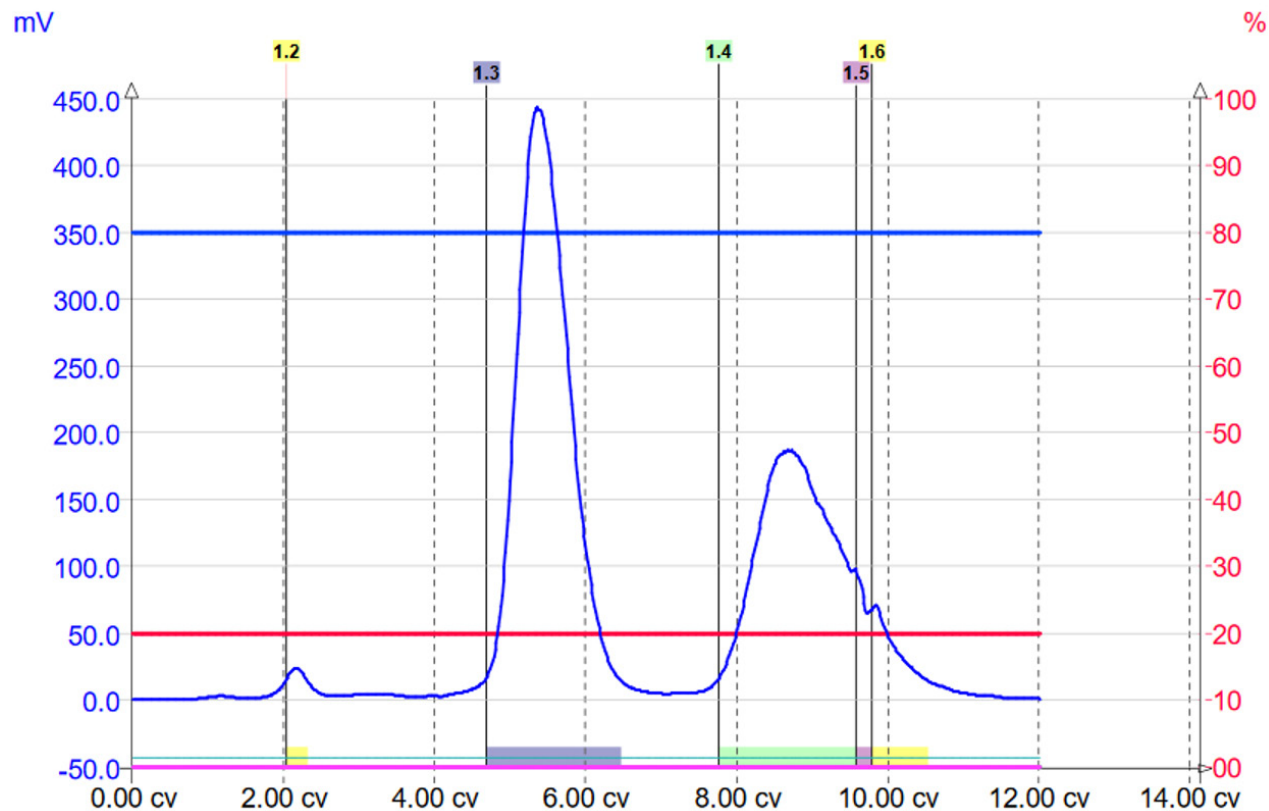
Injection mode: Liquid injection

Crude sample: 5mg (0.25mL cyclohexane)

Detection: ELSD (35°C; Automatic gain)

Elution conditions:

CV	A (%)	B (%)
0	80	20
12	80	20



To achieve this purification:

You will need

- puriFlash® 5.125
[Discover it](#) [Add to card](#)
- Integrated ELSD
[Discover it](#) [Add to card](#)
- puriFlash® column CT-201A-F0004
[Discover it](#) [Add to card](#)

We highly recommend

- Trolley
AYHF20 [Add to card](#)
- Manometer ELSD
FJ6720 [Add to card](#)
- 13x100mm Rack
AYHE30 [Add to card](#)

