

## 1. Analytical conditions

**Solvents:** A: Water + 0.1% TFA

B: Acetonitrile + 0.1% TFA

**HPLC Column:** puriFlash® BIO 100 C18-N 15µm 250x4.6mm

**Flow rate:** 2mL/min

**Injection mode:** Liquid injection

**Injection volume:** 10µL

**Detection:** UV 215nm

**Elution conditions:**

t (min)	A (%)	B (%)
00:00	95	5
30:00	60	40

## Compounds:

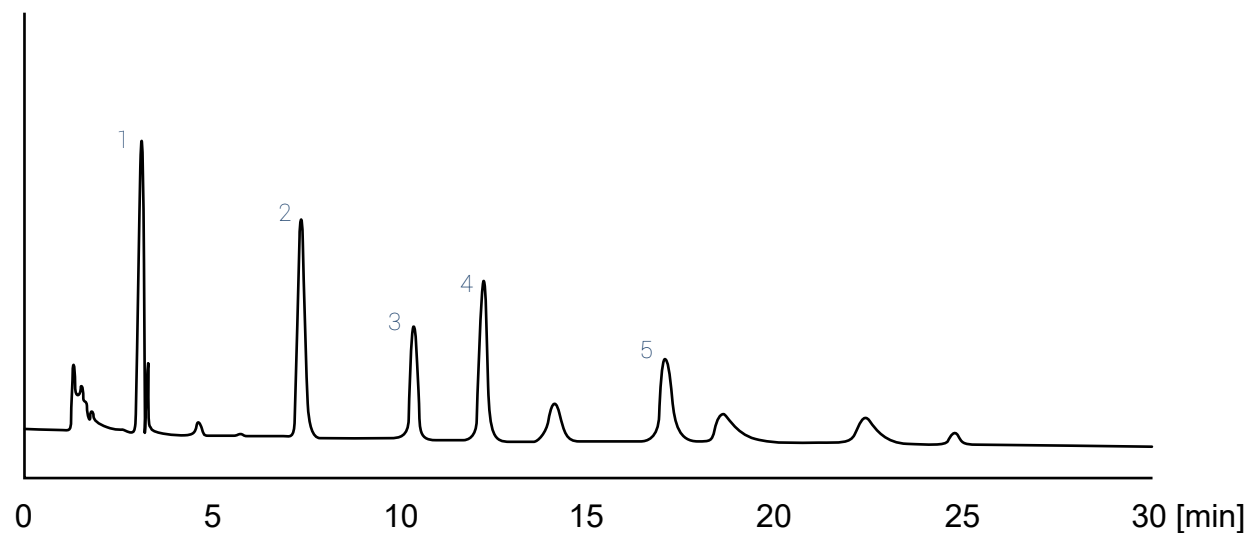
1. GLY-TYR (MW: 238 g.mol<sup>-1</sup>)

2. VAL-TYR-VAL (MW: 380g.mol<sup>-1</sup>)

3. Met-Enkephalin (MW: 574g.mol<sup>-1</sup>)

4. Angiotensin II (MW: 1 000g.mol<sup>-1</sup>)

5. Cytochrome C (MW: 11 749g.mol<sup>-1</sup>)



## 2. Flash conditions

**Device:** puriFlash® XS 420 Plus (or now puriFlash® XS 520 Plus)

**Solvents:** A: Water + 0.1% TFA

B: Acetonitrile + 0.1% TFA

**Columns:** PFB-15C18N-F0025

PFB-15C18T-F0025

PT-15C18N-F0025

PT-15C18T-F0025

**Flow rate:** 15mL/min

**Injection mode:** Liquid injection

**Injection volume:** 150µL

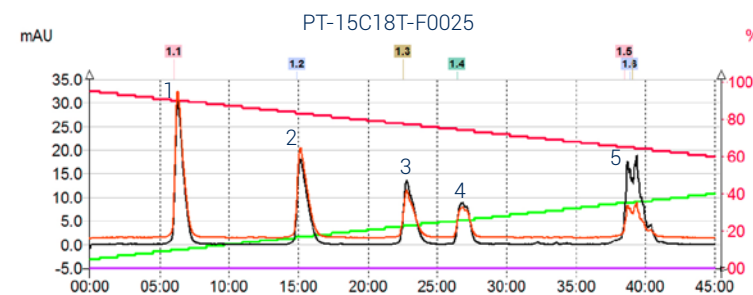
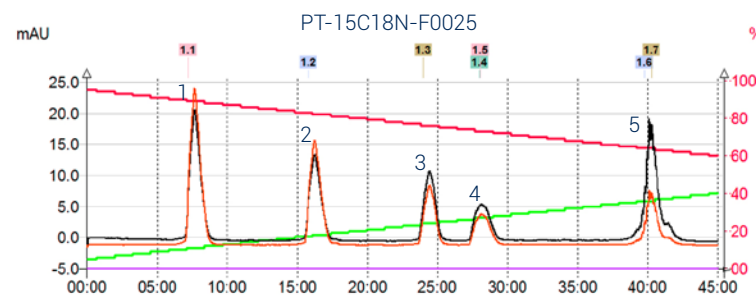
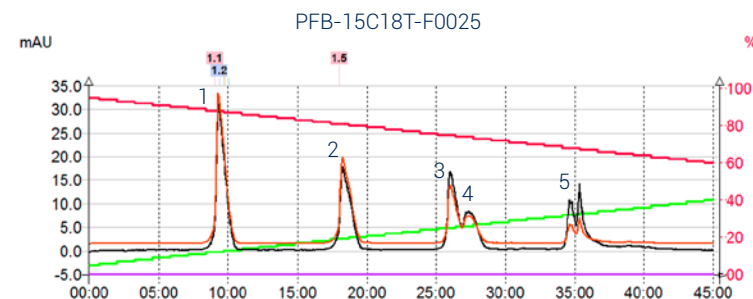
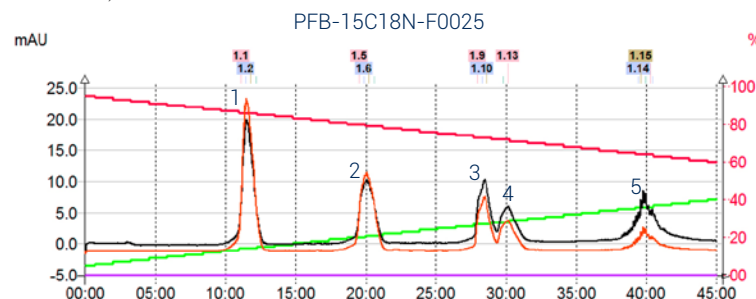
**Crude sample:** 1.8mg

**Detection:** UV 254nm (black), UV 280nm (orange)

**Pressure:** 7bar

**Elution conditions:**

t (min)	A (%)	B (%)
00:00	95	5
45:00	60	40



### To achieve this purification:

#### You will need

- puriFlash® XS 520 Plus  
[Discover it](#) [Add to card](#)
- puriFlash® column PFB-15C18N-F0025  
[Discover it](#) [Add to card](#)
- puriFlash® column PFB-15C18T-F0025  
[Discover it](#) [Add to card](#)
- puriFlash® column PT-15C18N-F0025  
[Discover it](#) [Add to card](#)
- puriFlash® column PT-15C18T-F0025  
[Discover it](#) [Add to card](#)

#### We highly recommend

- Safety waste cap with container 5L + Filter IO6930 [Add to card](#)
- Safety solvent caps kit - 4 units DV2760 [Add to card](#)
- Ballasting for 1/8" tubing - 5 units DZ7360 [Add to card](#)

