

1. Analytical conditions

Solvents: A: CH₃CN

B: Water + Acetic Acid (5%)

HPLC Column: Water Symetry C16 250x4.6mm

Flow rate: 1mL/min

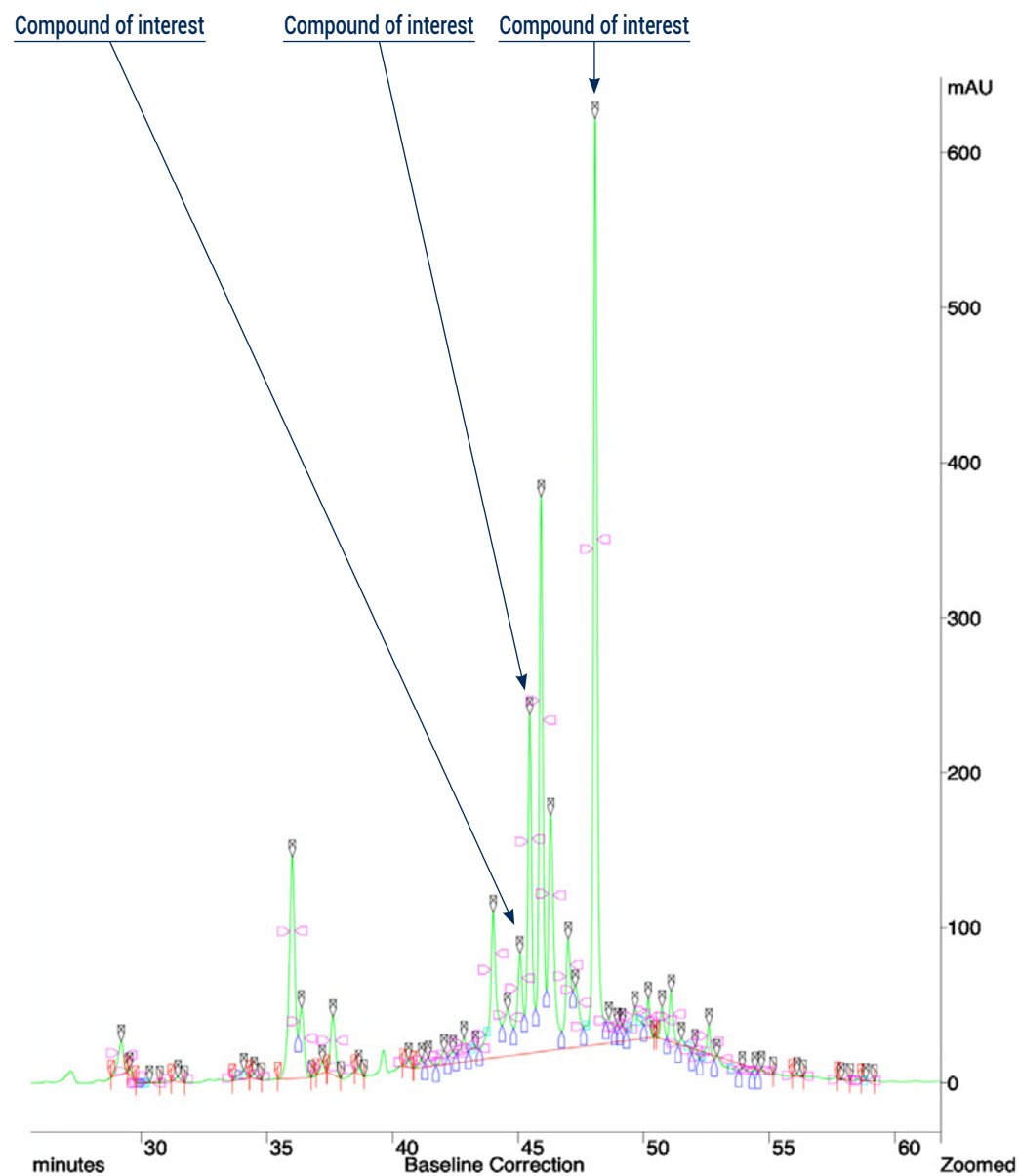
Injection mode: Liquid injection

Injection volume: 5µL

Detection: UV 254nm

Elution conditions:

t (min)	A (%)	B (%)
00:00	0	100
05:00	0	100
30:00	30	70
40:00	50	50
50:00	80	20
60:00	100	0
70:00	100	0



2. Flash conditions

Device: puriFlash® XS 420 Plus (or now puriFlash® XS 520 Plus)

Solvents: A: ACN

B: Water + Acetic Acid (5%)

Column: PF-15C18AQ-F0025

Flow rate: 15mL/min

Injection mode: Liquid injection

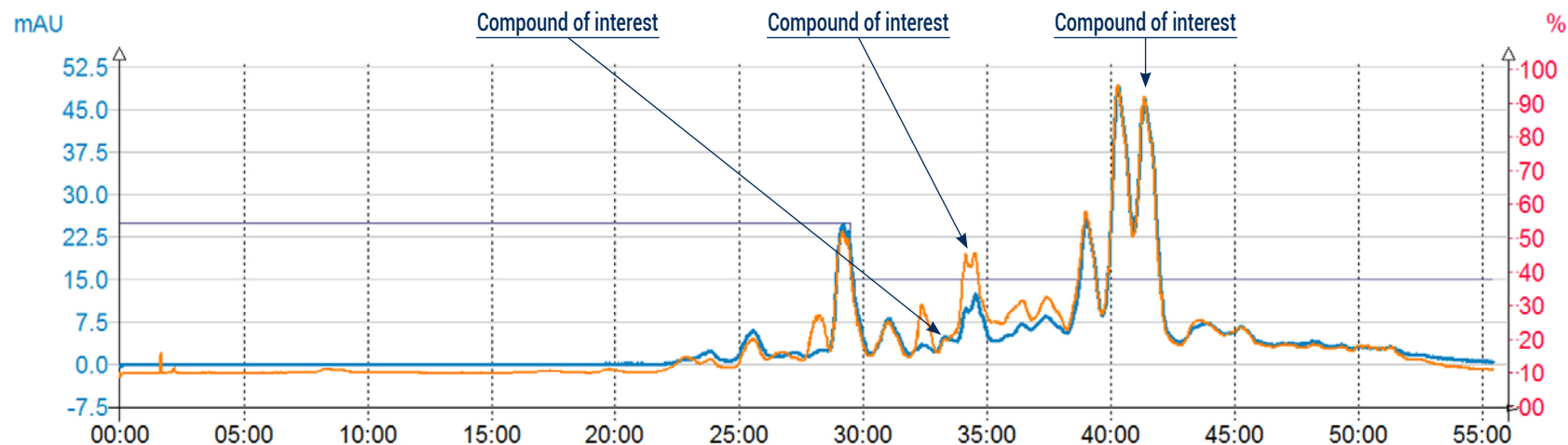
Injection volume: 100µL

Detection: UV 320nm (blue), UV Scan 230-380nm (orange)

Pressure: 12bar

Elution conditions:

t (min)	A (%)	B (%)
00:00	0	100
08:00	0	100
43:00	30	70
55:00	50	50
68:00	80	20
80:00	100	0
92:00	100	0



*Customer was satisfied as he wants to pre-purified crude sample containing a lot of impurities.
After this purification, compounds of interest will be purified on Prep column.*

To achieve this purification:

You will need

- puriFlash® XS 520 Plus
[Discover it](#) [Add to card](#)
- puriFlash® column PF-15C18AQ-F0025
[Discover it](#) [Add to card](#)

We highly recommend

- 21x150mm Rack
1R8620 [Add to card](#)
- Extractor with 2 extraction tubes + kit
1R8570 [Add to card](#)
- Ballasting for 1/8" tubing - 5 units
DZ7361 [Add to card](#)

