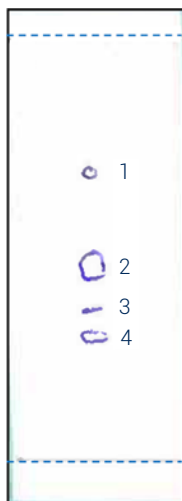


## 1. TLC method development



Mobile phase:  
95% CH<sub>2</sub>Cl<sub>2</sub> / MeOH 5%

Compound of interest:  
Compound 2

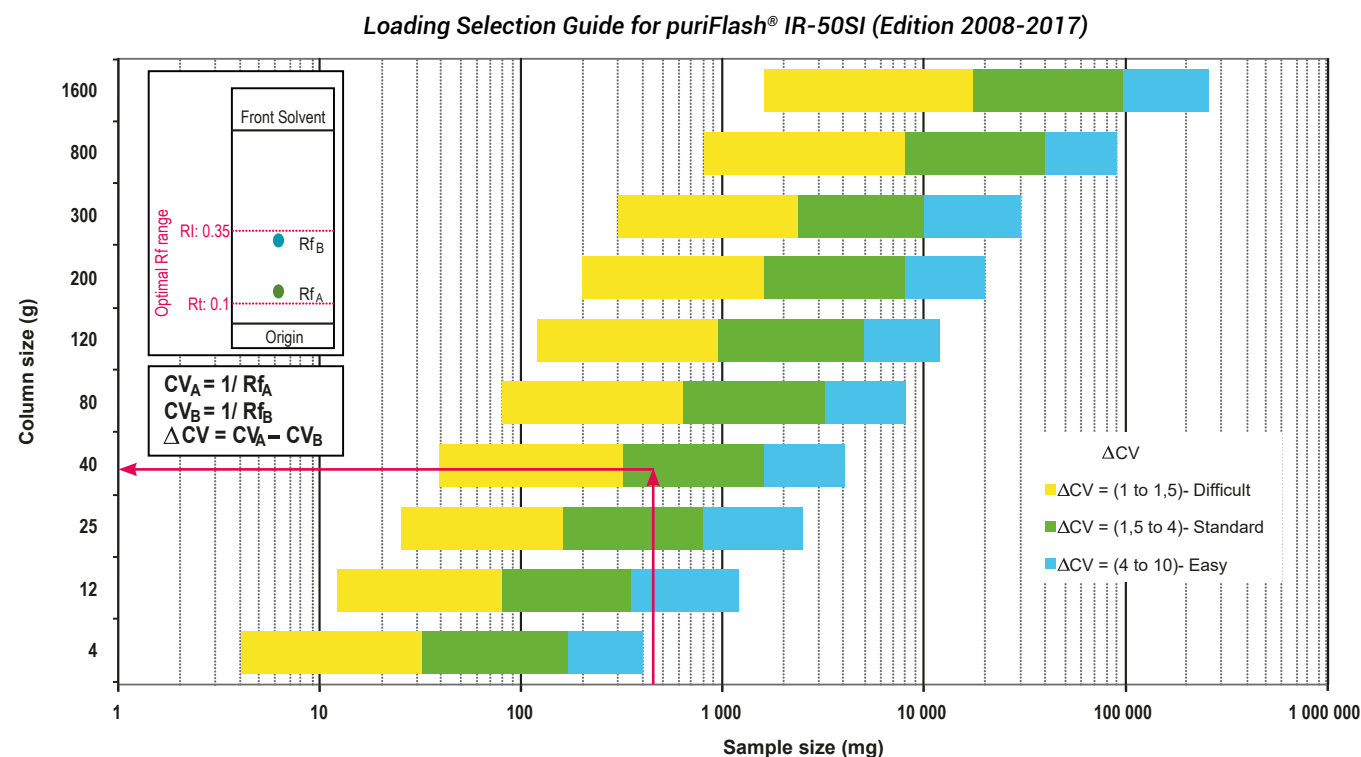
| Compound                 | Rf   | CV   |
|--------------------------|------|------|
| 1                        | 0.67 | 1.49 |
| $\Delta CV_{2-1} = 0.73$ |      |      |
| 2                        | 0.45 | 2.22 |
| $\Delta CV_{3-2} = 0.64$ |      |      |
| 3                        | 0.35 | 2.86 |
| 4                        | 0.28 | 3.57 |

## 2. Choice of the column according to the $\Delta CV$ & crude sample mass

Crude sample: 450mg

Column: PF-15SIHP-F0040

Loading capacity: 1.13%



Customer has chosen to use a PF-15SIHP-F0040 column to obtain a better separation (efficiency & purity) than with a IR-50SI-F0040 column.

### 3. Flash conditions

Device: puriFlash® 4125-iELSD (or now puriFlash® 5.125 pack-iELSD)

Solvents: A: CH<sub>2</sub>Cl<sub>2</sub>

B: MeOH

Column: PF-15SIHP-F0040

Flow rate: 26mL/min

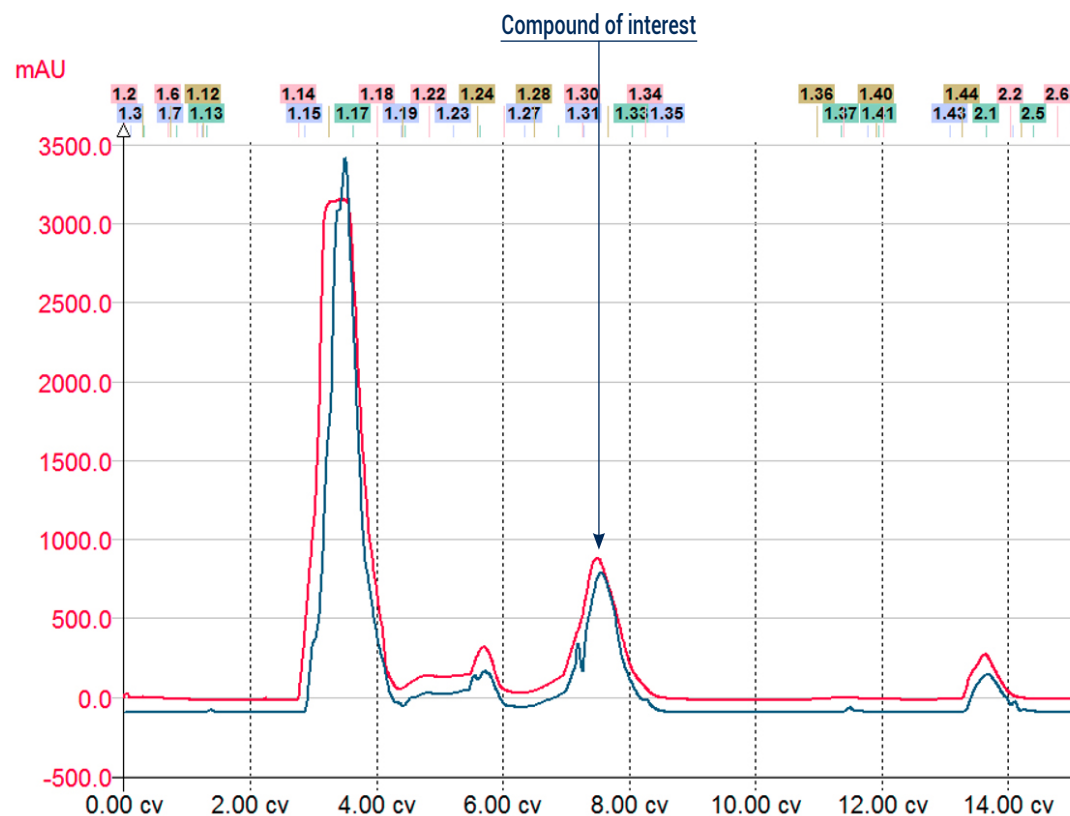
Injection mode: Solid deposit with celite (Dry-load F0004)

Crude sample: 450mg

Detection: UV 250nm (blue), ELSD (35°C; Automatic gain) (red)

Elution conditions:

| CV    | A (%) | B (%) |
|-------|-------|-------|
| 0     | 99    | 1     |
| 10.72 | 99    | 1     |
| 19.98 | 90    | 10    |



#### To achieve this purification:

##### You will need

- puriFlash® 5.125  
[Discover it](#) [Add to card](#)
- Integrated ELSD  
[Discover it](#) [Add to card](#)
- puriFlash® column PF-15SIHP-F0040  
[Discover it](#) [Add to card](#)
- puriFlash® Dry-load PF-DLE-F0004  
[Discover it](#) [Add to card](#)

##### We highly recommend

- Magic box AXF7L0 [Add to card](#)
- 21x150mm Rack AYHE60 [Add to card](#)
- Tubes 21x150mm FL1120 [Add to card](#)

##### Download our App

"TLC to Flash & Prep Chromatography" to make your TLC developments easier and faster.

