

1. Analytical conditions

Solvents: A: Water

B: ACN

HPLC Column: Kinetex (Core-Shell) C18 50x2.1mm 2.6µm

Flow rate: 0.5mL/min

Injection mode: Liquid injection

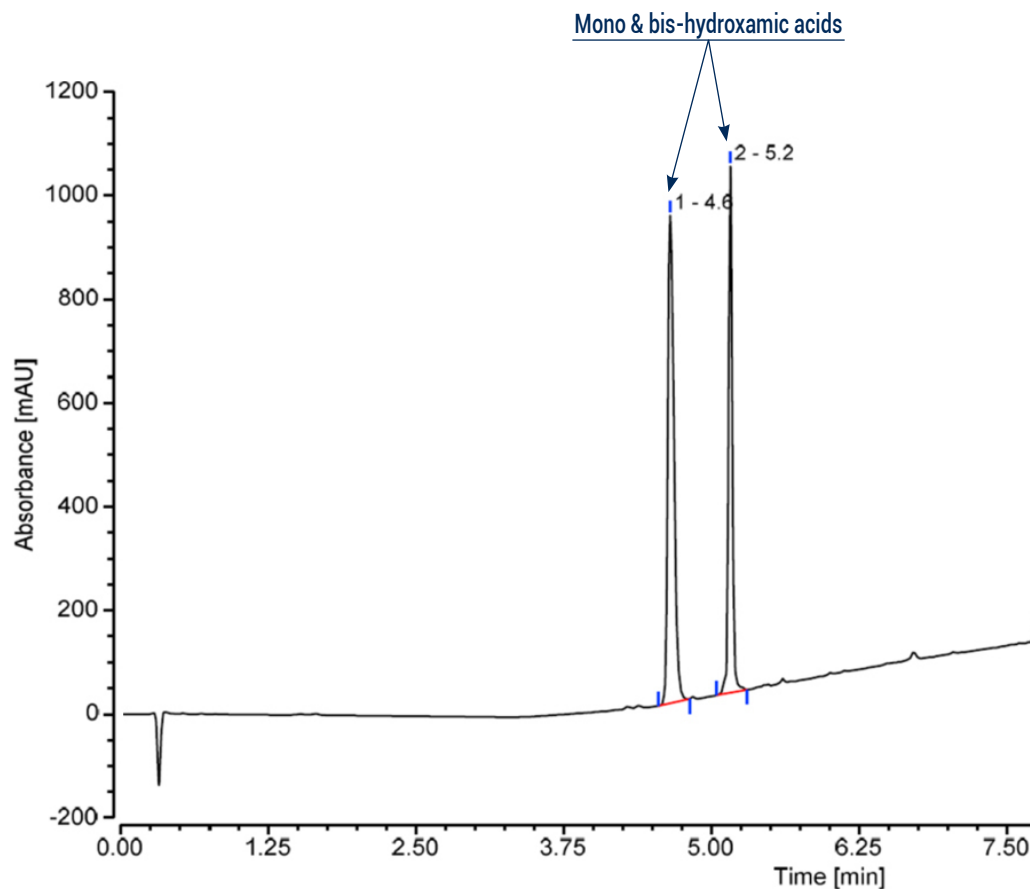
Injection volume: 5µL

Concentration: 1mg/mL

Detection: UV 220nm

Elution conditions:

t (min)	A (%)	B (%)
00:00	100	0
02:00	100	0
07:00	0	100



2. Flash conditions

Device: puriFlash® XS 420 Plus (or now puriFlash® XS 520 Plus)

Solvents: A: Water

B: ACN

Column: PF-15C18AQ-F0025

Flow rate: 15mL/min

Injection mode: Liquid injection

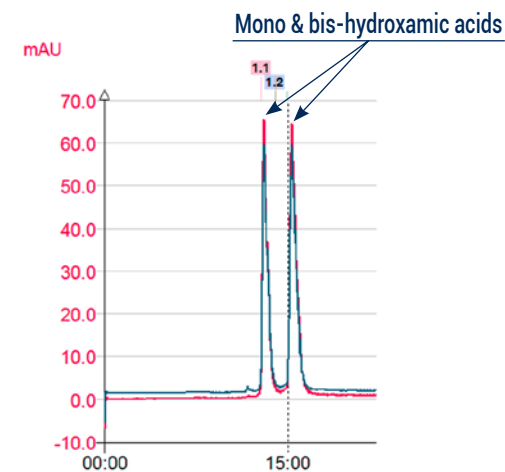
Injection volume: 900µL

Concentration: 1mg/mL

Detection: UV 220nm (red), UV Scan 210-400nm (blue)

Elution conditions:

t (min)	A (%)	B (%)
00:00	100	0
30:00	50	50
35:00	50	50



3. Overload

Device: puriFlash® XS 420 Plus (or now puriFlash® XS 520 Plus)

Solvents: A: Water

B: ACN

Column: PF-15C18AQ-F0025

Flow rate: 15mL/min

Injection mode: Liquid injection

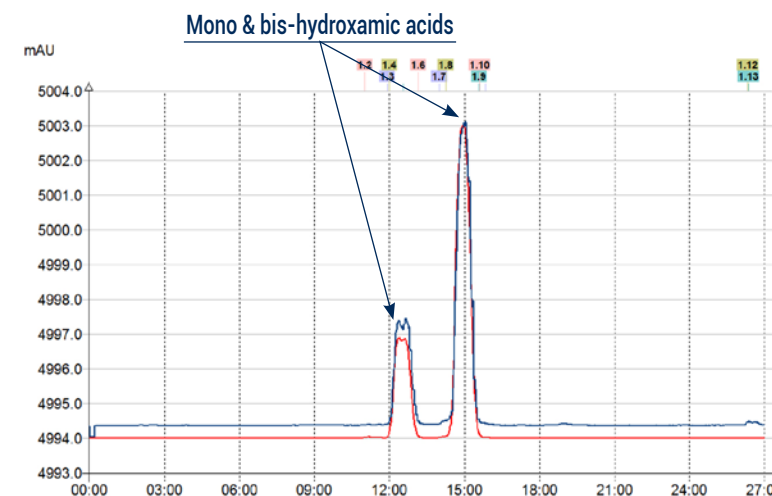
Injection volume: 2ml

Crude sample: 45mg

Detection: UV 220nm (red), UV Scan 210-400nm (blue)

Elution conditions:

t (min)	A (%)	B (%)
00:00	100	0
22:08	63	37
27:00	0	100



To achieve this purification:

You will need

■ puriFlash® XS 520 Plus

[Discover it](#) [Add to card](#)

■ puriFlash® column PF-15C18AQ-F0025

[Discover it](#) [Add to card](#)

We highly recommend

■ 13x100mm Rack

1R8590 [Add to card](#)

■ Tube holding claw 13mm

AYHEB0 [Add to card](#)

■ Tubes 13x100mm

BH3901 [Add to card](#)