

## 1.1. Analytical conditions

Solvents: A: Water + 0.1% TFA

B: ACN

HPLC Column: Kinetex XB C18 50x2.1 mm 1.7µm

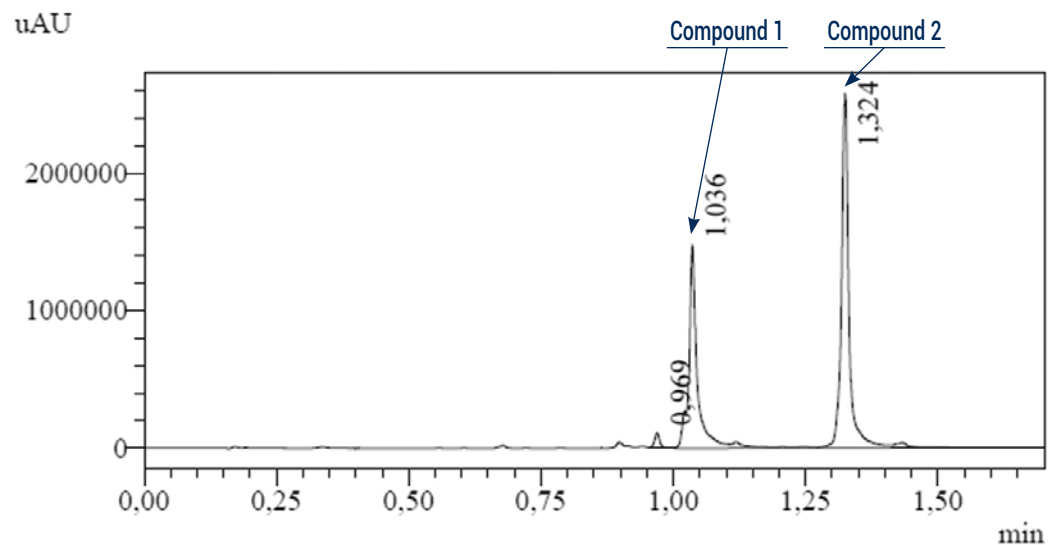
Flow rate: 0.8mL/min

Injection mode: Liquid injection

Detection: UV 254nm, MS

Elution conditions:

t (min)	A (%)	B (%)
00:00	95	5
01:30	0	100

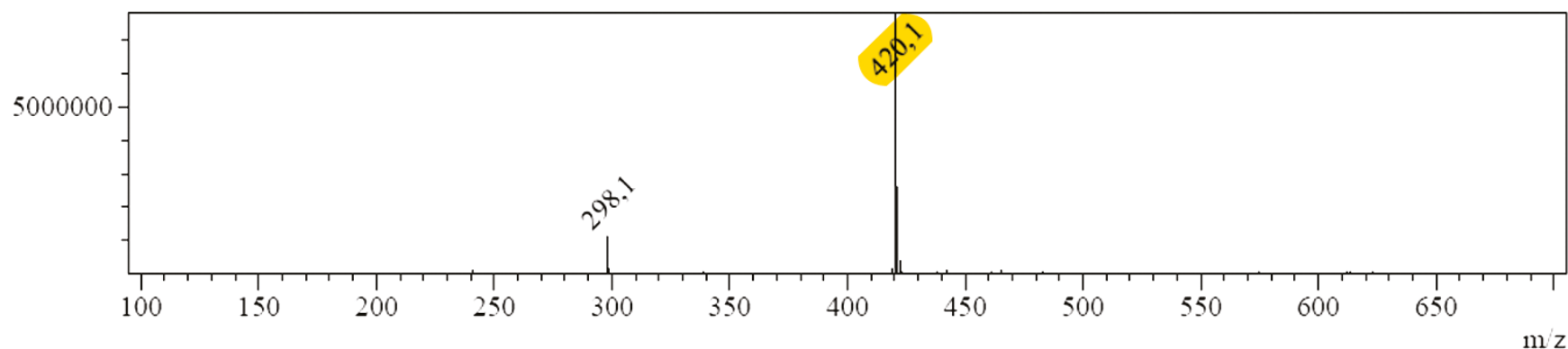


Peak No.: 17

Retention Time: 1.340

Base Mass: 420.1

Intensity



## 1.2. Prep conditions

**Device:** puriFlash® 4250-MS (or now puriFlash® 5.250MS)

**Solvents:** A: Water + 0.1% TFA

B: ACN

**Column:** Waters C18 150x50mm 5µm

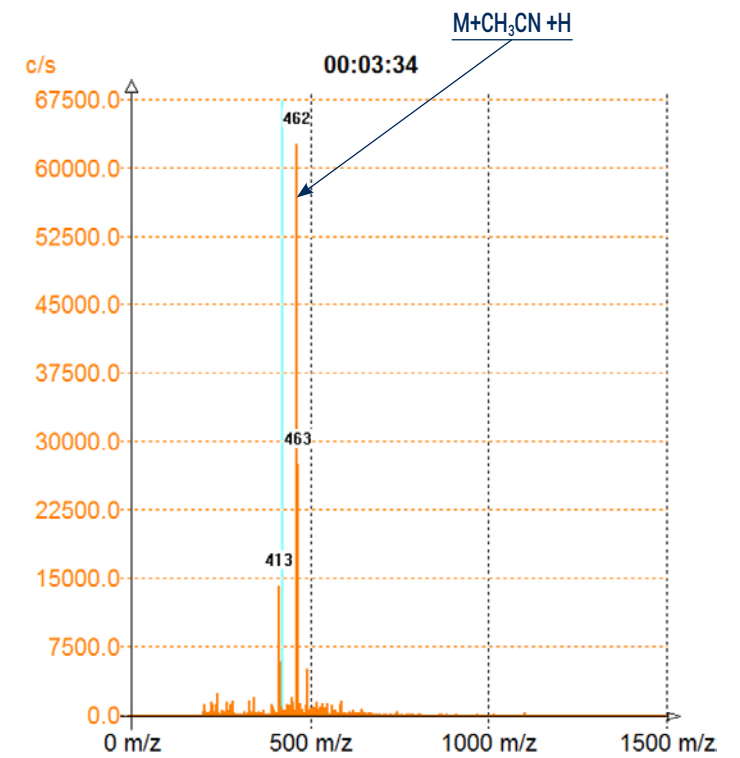
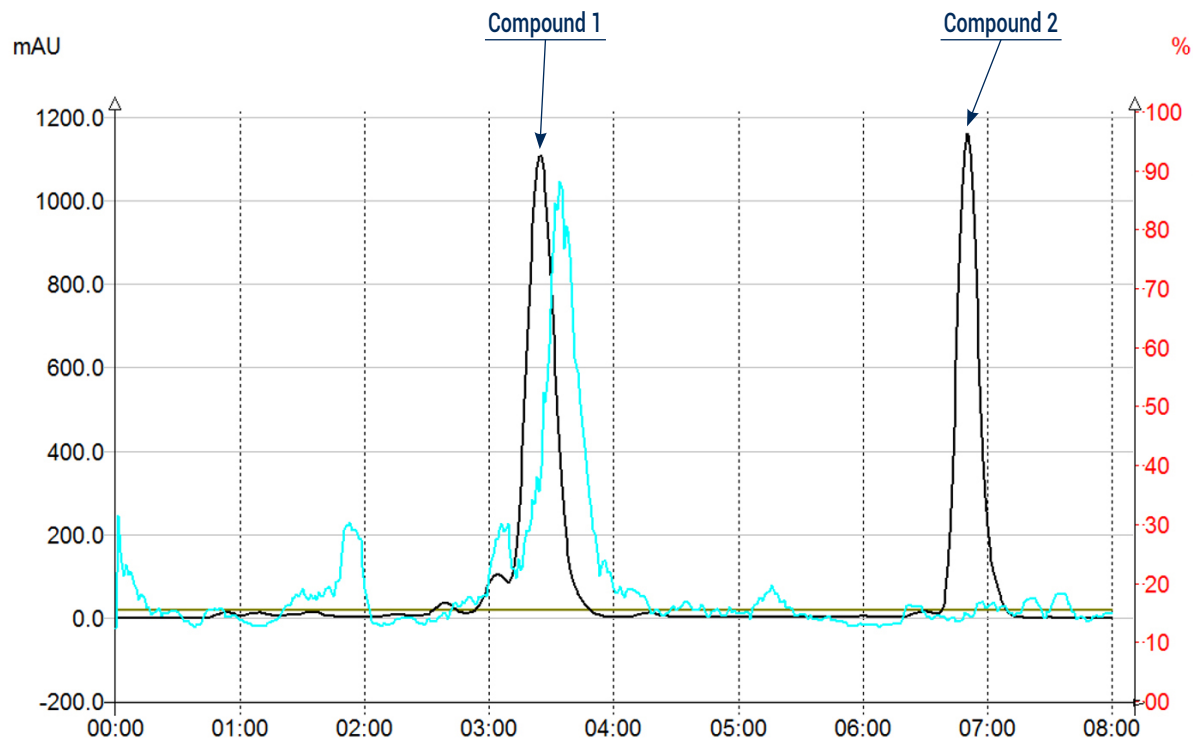
**Flow rate:** 128mL/min

**Injection mode:** Liquid injection

**Detection:** UV 254nm (black), MS XIC 418-420m/z (blue)

**Elution conditions:**

t (min)	A (%)	B (%)
00:00	50	50
08:00	4	96



## 2.1. Analytical conditions

Solvents: A: Water + 0.1% TFA

B: ACN

HPLC Column: Kinetex XB C18 50x2.1mm 1.7 $\mu$ m

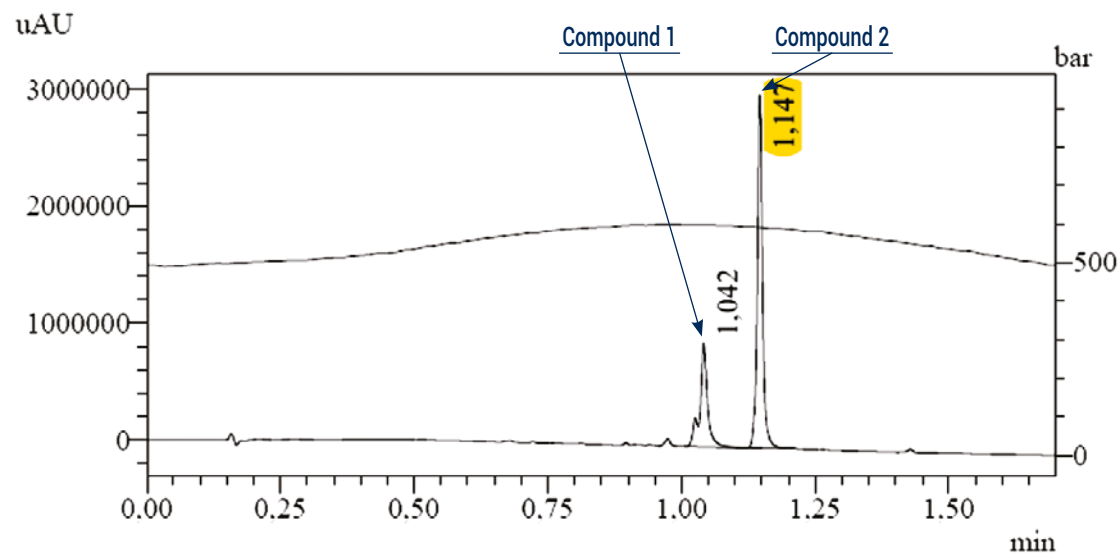
Flow rate: 0.8mL/min

Injection mode: Liquid injection

Detection: UV 214nm, MS

Elution conditions:

t (min)	A (%)	B (%)
00:00	95	5
01:30	0	100

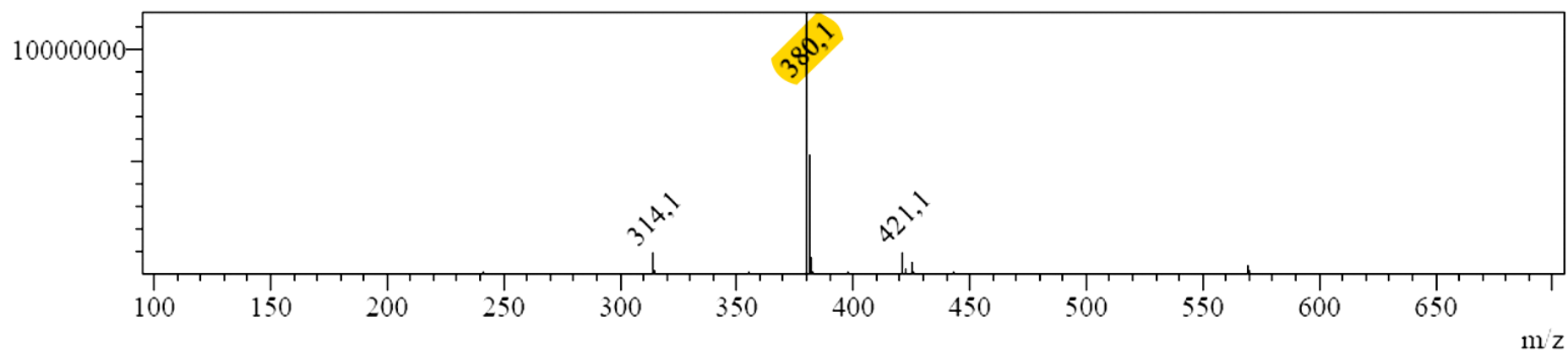


Peak No.: 11

Retention Time: 1.162

Base Mass: 380.1

Intensity



## 2.2. Prep conditions

**Device:** puriFlash® 4250-MS (or now puriFlash® 5.250MS)

**Solvents:** A: Water + 0.1% TFA

B: ACN

**Column:** Waters C18 150x50mm 5µm

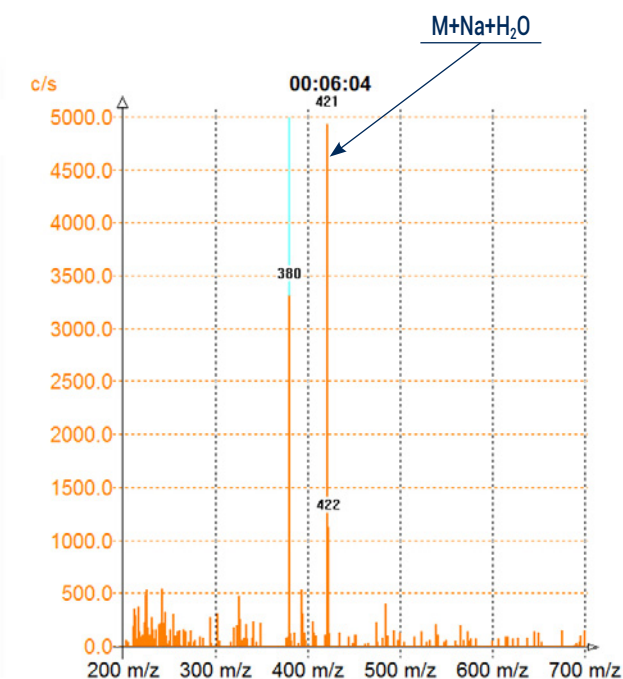
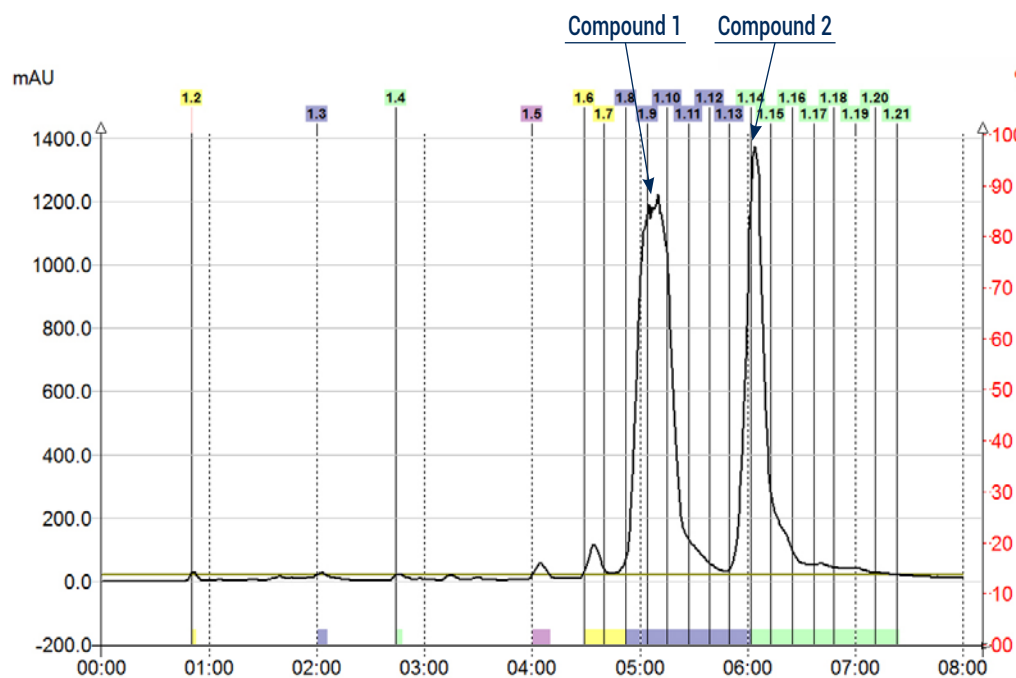
**Flow rate:** 128mL/min

**Injection mode:** Liquid injection

**Detection:** UV 254nm (black), MS TIC

**Elution conditions:**

t (min)	A (%)	B (%)
00:00	35	65
08:00	4	96



### To achieve this purification:

#### You will need

- puriFlash® 5.250  
[Discover it](#) [Add to card](#)
- puriFlash® MS  
[Discover it](#) [Add to card](#)

#### We highly recommend

- Flow cell - Optical path length 1.3mm  
 GO1020 [Add to card](#)
- Extractor with 2 extraction tubes + kit  
 AYHDZO [Add to card](#)
- Magic box Flash  
 AXF7L0 [Add to card](#)

