

## 1. Analytical conditions

Solvents: A: Water

B: ACN

HPLC Column: C18 50x2.1mm 1.7µm

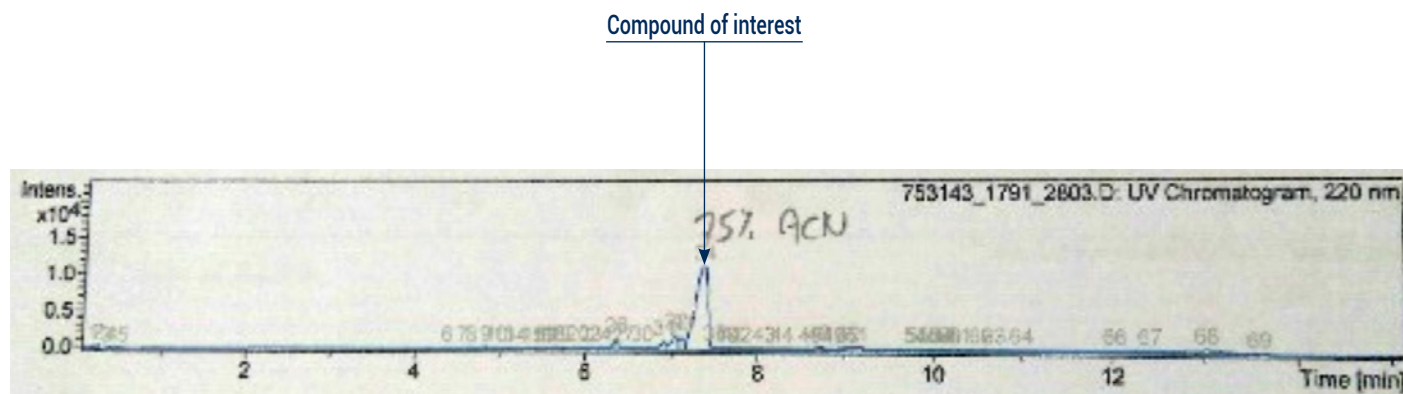
Flow rate: 1mL/min

Injection mode: Liquid injection

Detection: UV 220nm

Elution conditions:

t (min)	A (%)	B (%)
00:00	98	2
14:00	0	100



## 2. Prep conditions

Device: puriFlash® 4250 (or now puriFlash® 5.250)

Solvents: A: Water

B: ACN

Column: C18 250x21.2mm 5µm

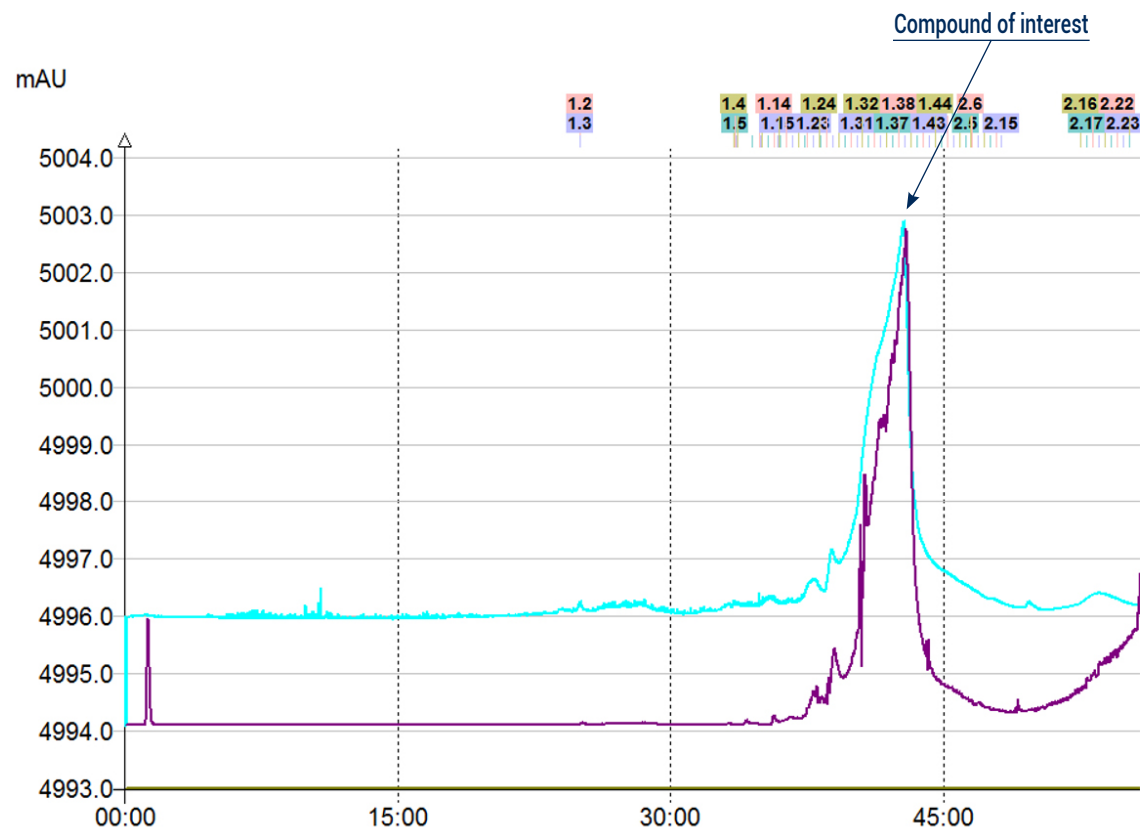
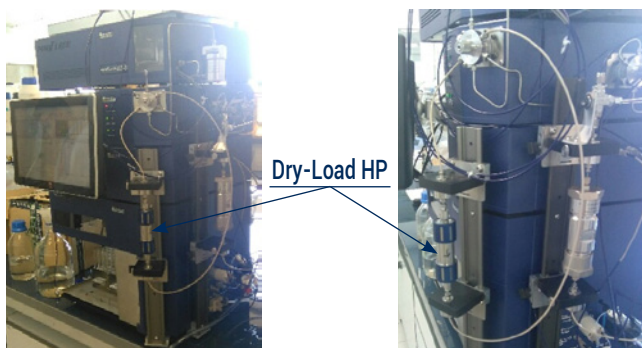
Flow rate: 75mL/min

Injection mode: Solid deposit with celite (Dry-load HP 50x21.2mm)

Detection: UV 220nm (blue), ELSD 45°C (purple)

Elution conditions:

t (min)	A (%)	B (%)
00:00	98	2
60:00	0	100



### To achieve this purification:

#### You will need

- puriFlash® 5.250  
[Discover it](#) [Add to card](#)
- puriFlash® Dry-load HP 50x21.2mm  
[Discover it](#) [Add to card](#)

#### We highly recommend

- Safety solvent caps kit - 4 units  
B0DANO [Add to card](#)
- Safety waste cap with container 5L + Filter  
B1SUJ0 [Add to card](#)
- Trolley  
AYHF20 [Add to card](#)

