

## 1. Analytical conditions

**Solvents:** A: Water  
 B: TEAB\* (2M)  
 C: TEAB\* (0.05M)

**HPLC Column:** Waters column

**Flow rate:** 1mL/min

**Injection mode:** Liquid injection

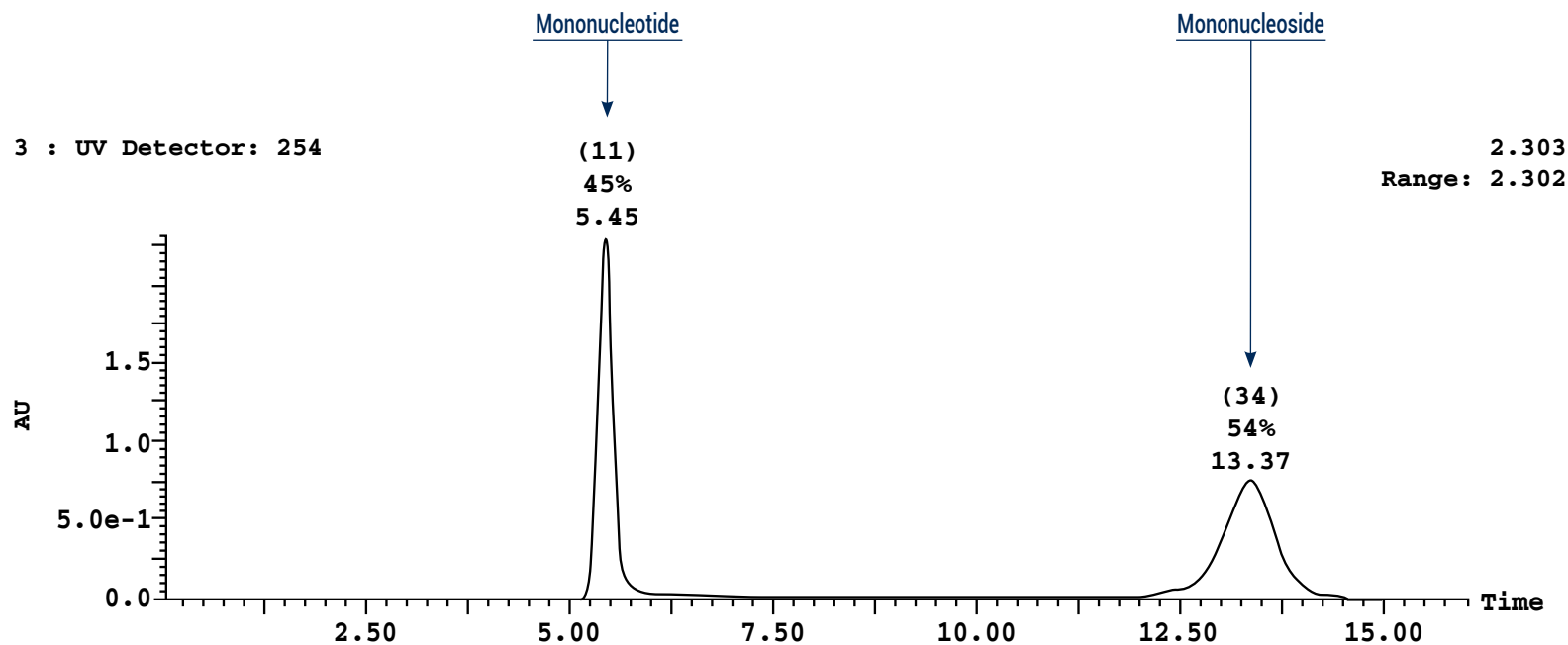
**Injection volume:** 5µL

**Detection:** UV 254nm

**Elution conditions:**

t (min)	A (%)	B (%)	C (%)
00:00	85	5	10
01:00	85	5	10
06:00	5	85	10
08:00	5	85	10
16:00	85	5	10

\* TriEthyl Ammonium Bicarbonate



## 2. Flash conditions

**Device:** puriFlash® 4250 (or now puriFlash® 5.250)

**Solvents:** A: Water

B: TEAB\* (2M)

**Column:** Bio Works Baby Q (5mL)

**Flow rate:** 5mL/min

**Injection mode:** Liquid injection

**Injection volume:** 170mL injected, 0.2mMol

**Detection:** UV 254nm (green), 200nm (red)

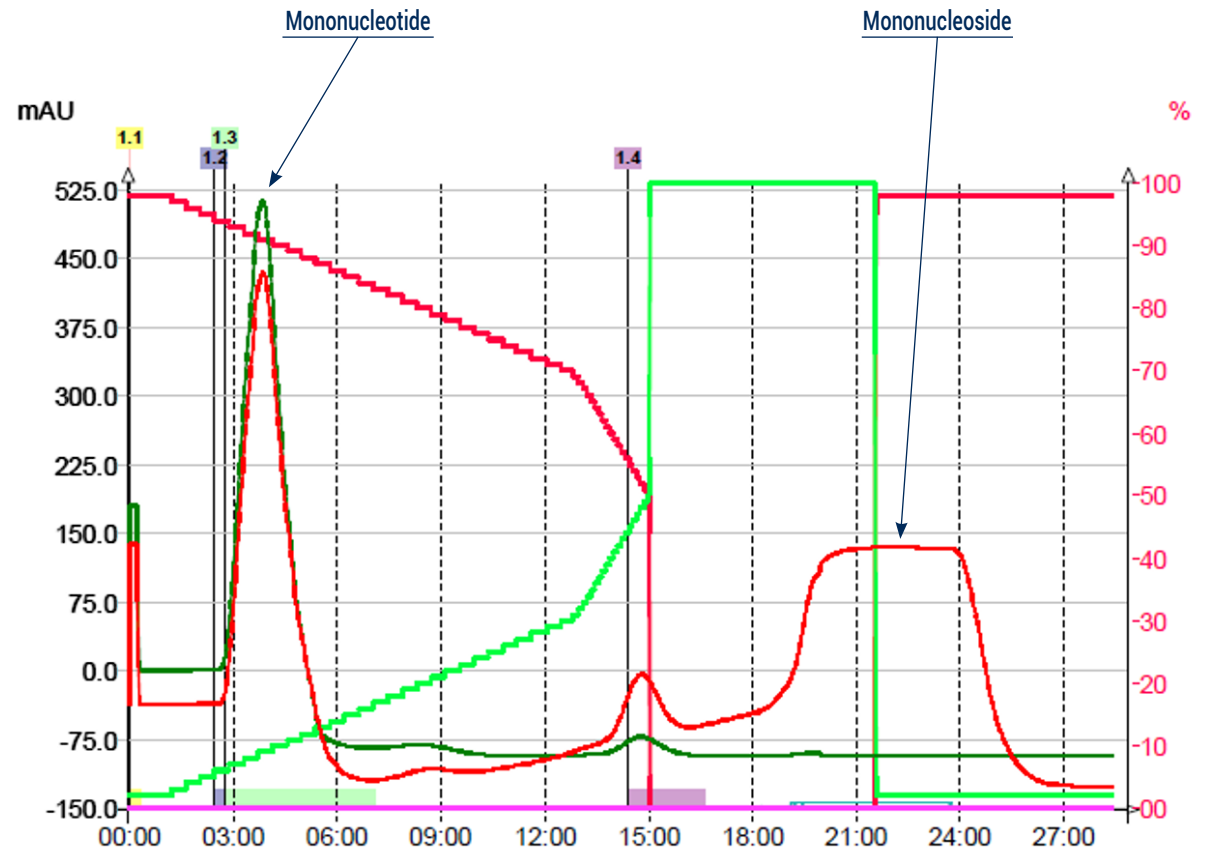
**Pressure:** <1bar

**Mode:** Automatic Gradient Optimization

**Elution conditions:**

t (min)	A (%)	B (%)	Removal of storage solution (20% EtOH):
00:00	98	2	3CV 100% of H <sub>2</sub> O
01:00	98	2	<b>Equilibration:</b>
13:00	68	32	5 CV 100% of TEAB (2M)
15:00	50	50	20 CV 100% of TEAB (0,05M)
18:00	0	100	<b>Regeneration:</b>
21:32	0	100	5 CV 100% of TEAB (2M)
21:35	98	2	20 CV 100% of TEAB (0,05M)
35:40	98	2	<b>Cleaning:</b>
			10 CV 0,5NaOH
			10 CV of H <sub>2</sub> O
			5 CV 20% EtOH

\* TriEthyl Ammonium Bicarbonate



### To achieve this purification:

#### You will need

- puriFlash® 5.250  
[Discover it](#) [Add to card](#)
- puriFlash® column Bio Works Baby Q (5mL)  
[Discover it](#) [Add to card](#)

#### We highly recommend

- 21x150mm Rack  
 AYHE60 [Add to card](#)
- Safety waste cap with container 5L + Filter  
 B1SUJ0 [Add to card](#)
- Ballasting for 1/8" tubing - 5 units  
 DZ7360 [Add to card](#)

