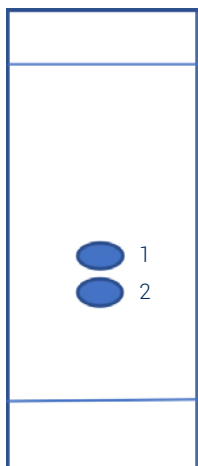




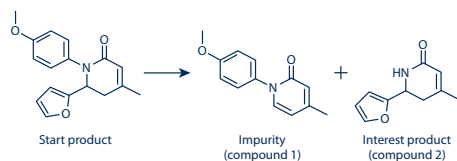
1. TLC method development



Mobile phase: Hexane / Ethyl acetate

Compound	Rf	CV
1	0.4	2.5
2	0.37	2.702

$\Delta CV = 0.202$ (difficult)

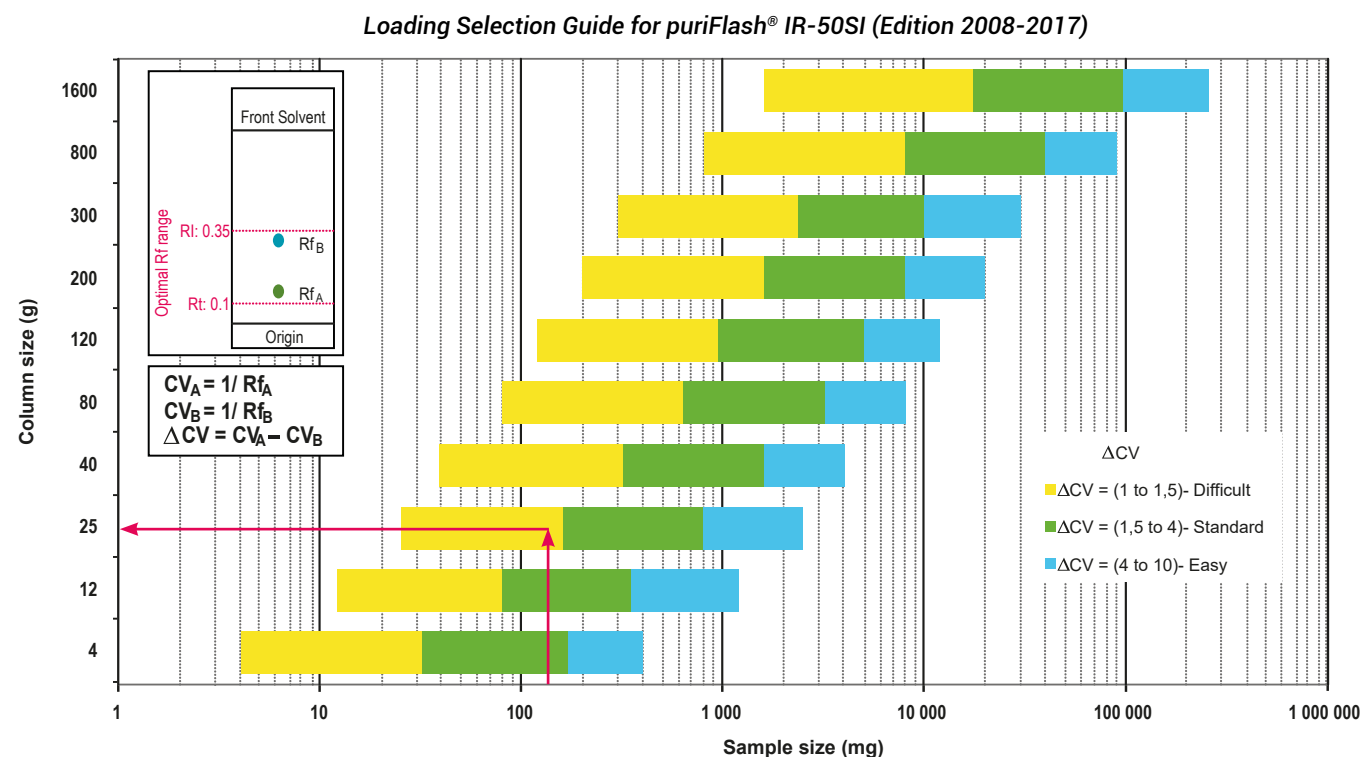


2. Choice of the column according to the ΔCV & crude sample mass

Crude sample: 150mg

Column: PF-15SIHP-F0025

Loading capacity: 0.60%



Customer has chosen to use a PF-15SIHP-F0025 column to obtain a better separation (efficiency & purity) than with a IR-50SI-F0025 column.

3. Flash conditions

Device: puriFlash® 450-iELSD (or now puriFlash® 5.050 pack iELSD)

Solvents: A: Hexane

B: Ethyl acetate

Column: PF-15SIHP-F0025

Flow rate: 15mL/min

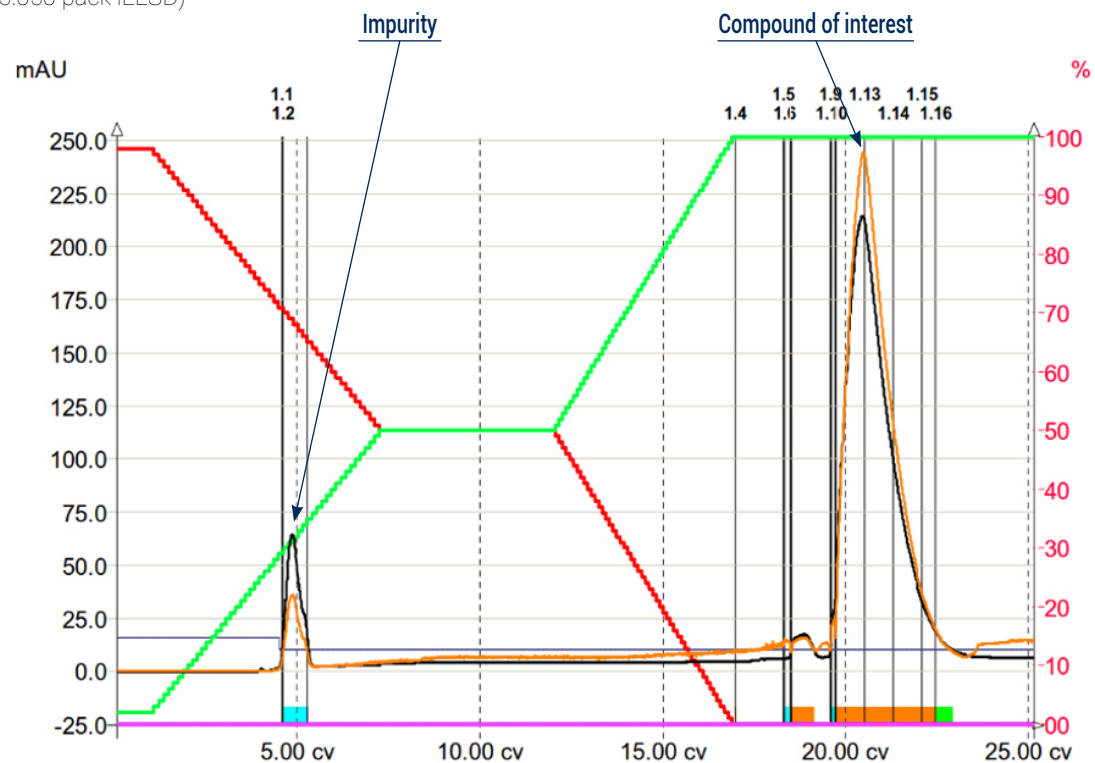
Injection mode: Liquid injection

Crude sample: 150mg

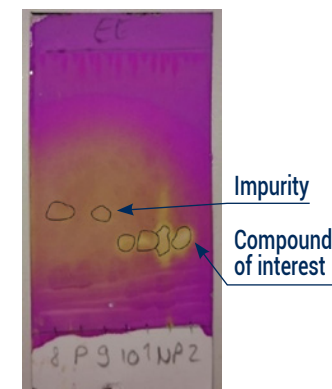
Detection: UV 220nm & 250nm

Elution conditions:

CV	A (%)	B (%)
0	100	0
1	100	0
7	50	50
12	50	50
16	0	100
25	0	100



4. TLC confirmation



To achieve this purification:

You will need

- puriFlash® 5.050
[Discover it](#) [Add to card](#)
- Integrated ELSD
[Discover it](#) [Add to card](#)
- puriFlash® column PF-15SIHP-F0025
[Discover it](#) [Add to card](#)

We highly recommend

- Safety waste cap with container 5L + Filter B1SUJ0 [Add to card](#)
- Ballasting for 1/8" tubing - 5 units DZ7360 [Add to card](#)
- Compressor for integrated ELSD without quiet cover 1H3490 [Add to card](#)

Download our App

"TLC to Flash & Prep Chromatography" to make your TLC developments easier and faster.

