

1. Analytical conditions

Solvents: A: Water + 0.1% TFA

B: ACN + 0.1% TFA

HPLC Column: C4 50x4.6mm 5µm

Flow rate: 1mL/min

Injection mode: Liquid injection

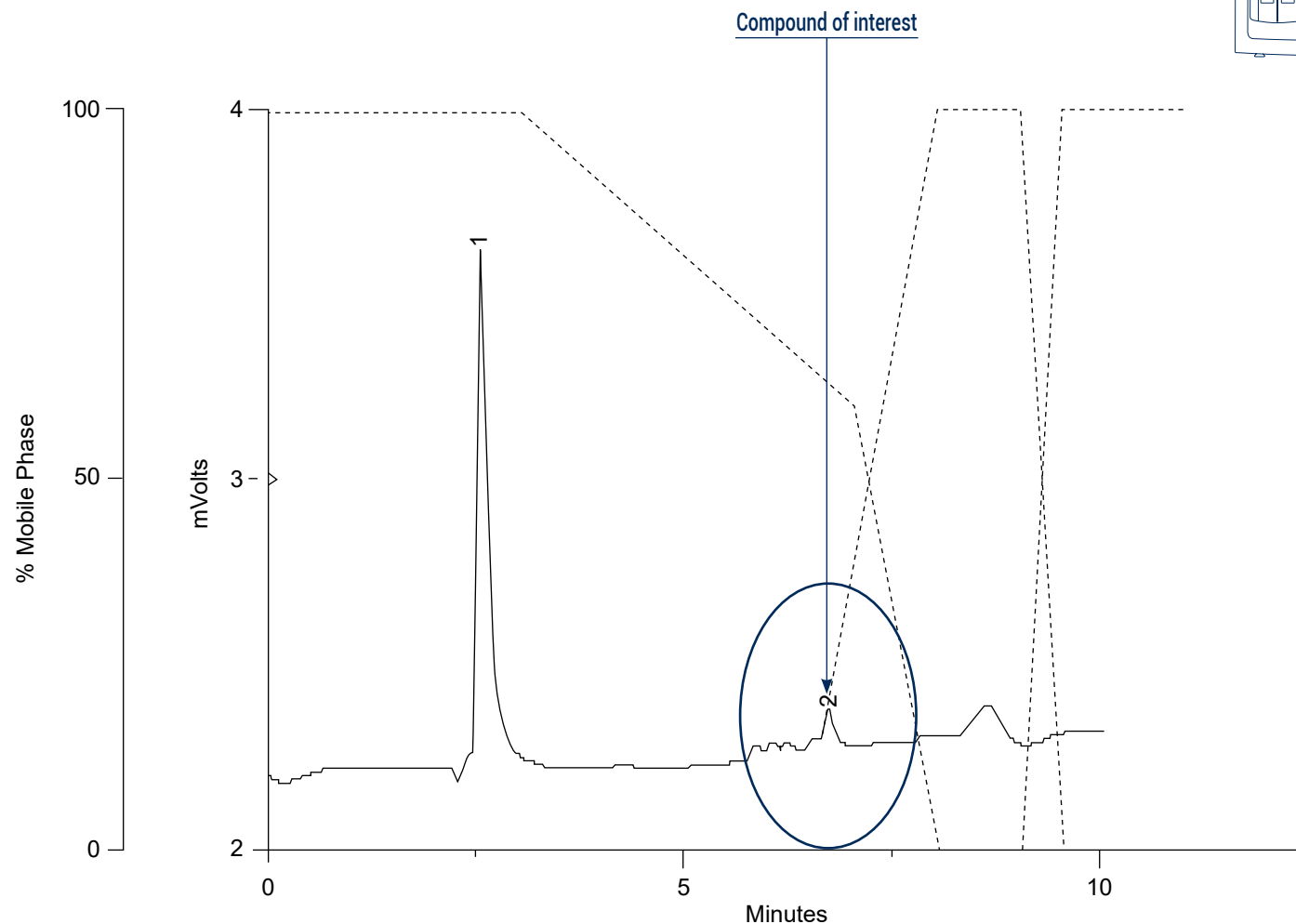
Injection volume: 10µL

Concentration: 8mg/mL

Detection: UV 254nm

Elution conditions:

t (min)	A (%)	B (%)
00:00	100	0
03:00	100	0
06:48	60	40
07:36	0	100
08:36	0	100



2. Flash conditions

Device: puriFlash® 4250-iELSD (or now puriFlash® 5.250 pack iELSD)

Solvents: A: Water + 0.1% TFA

B: ACN + 0.1% TFA

Column: PT-30C4-F0012 (or now PT-15C4-F0012)

Flow rate: 20mL/min

Injection mode: Liquid injection

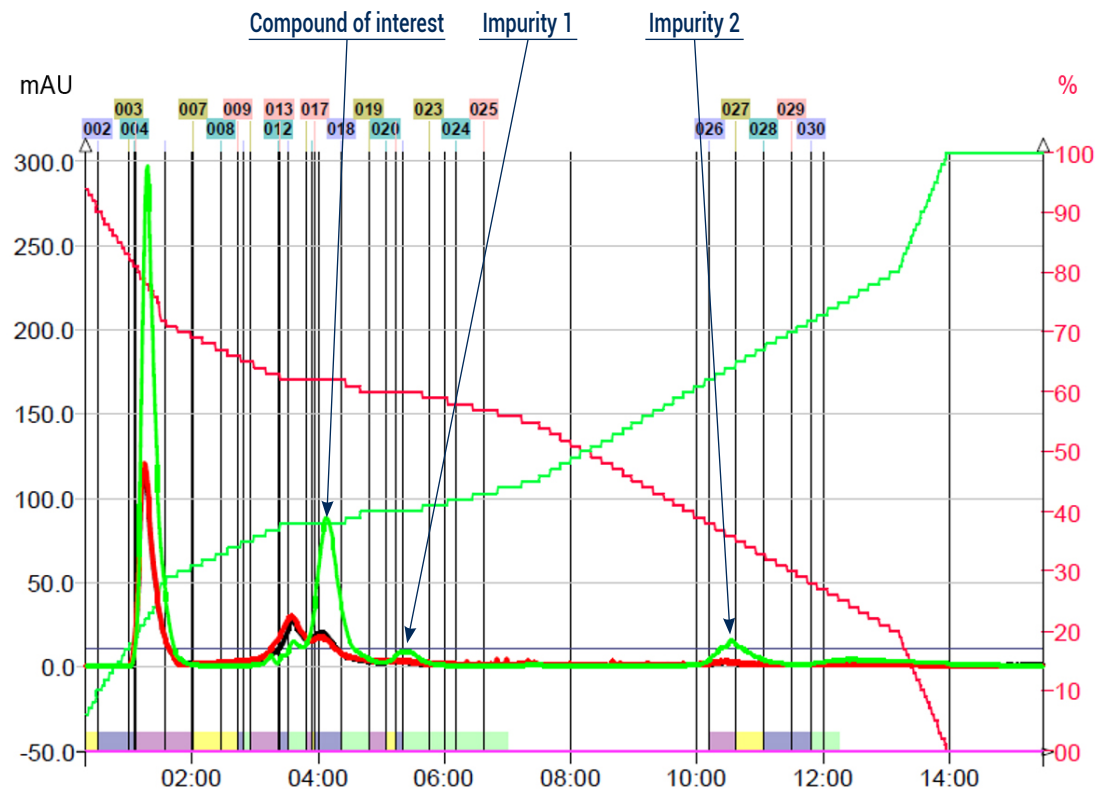
Crude sample: 40mg

Concentration: 8mg/mL

Detection: UV 254nm (red), UV Scan 250-400nm (black),
ELSD (55°C, Gain 8) (green)

Elution conditions:

t (min)	A (%)	B (%)
00:00	95	5
01:30	70	30
03:30	65	35
13:00	20	80
14:00	0	100
15:00	0	100



To achieve this purification:

You will need

- puriFlash® 5.250
[Discover it](#) [Add to card](#)
- Integrated ELSD
[Discover it](#) [Add to card](#)
- puriFlash® column PT-15C4-F0012
[Discover it](#) [Add to card](#)

We highly recommend

- Manometer ELSD
FJ6720 [Add to card](#)
- Safety solvent caps kit - 4 units
BODANO [Add to card](#)
- Safety waste cap with container 5L+ filter
B1SUJ0 [Add to card](#)

